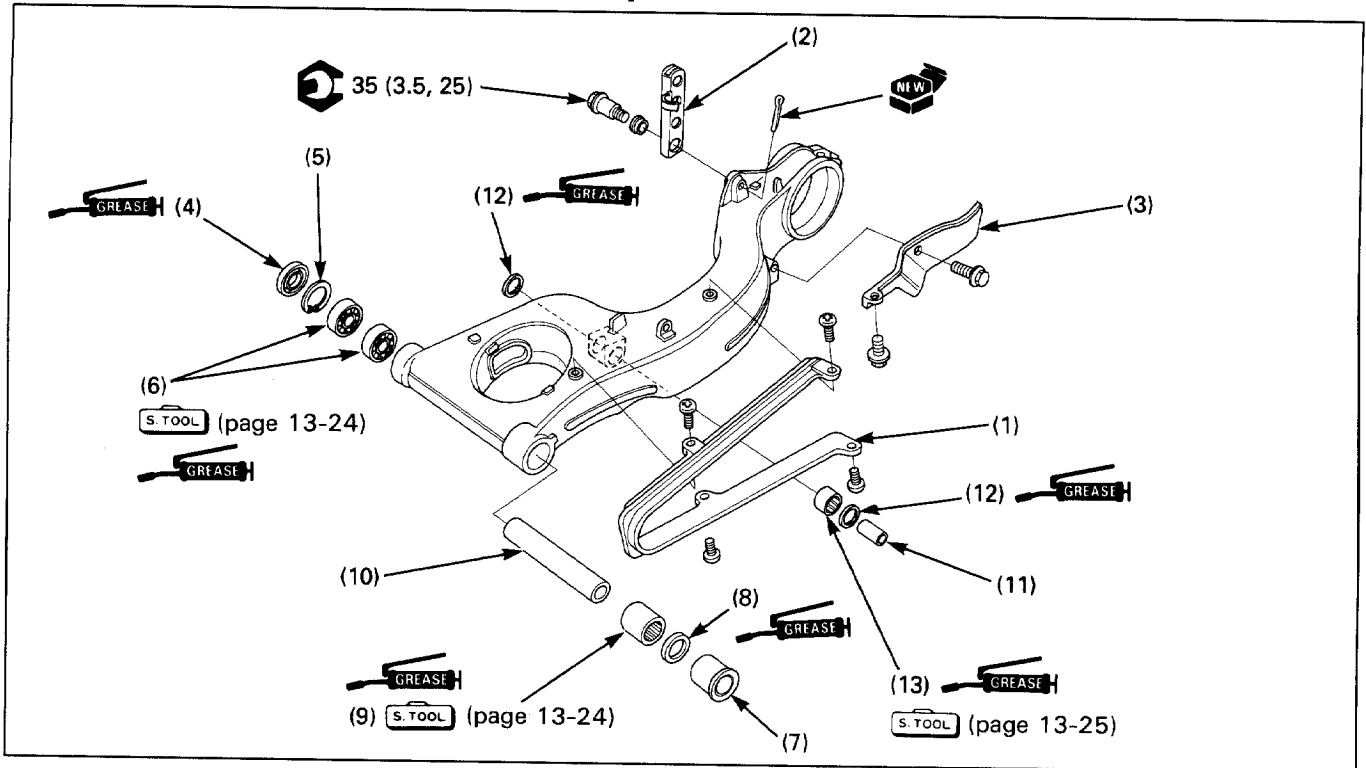


Swingarm Disassembly/Assembly



Requisite Service

• Rear wheel removal/installation (page 13-2)

• Swingarm removal/installation (page 13-20)

Procedure		Q'ty	Remarks
Disassembly Order			Assembly is in the reverse order of disassembly.
(1)	Drive chain slider	1	
(2)	Brake torque rod	1	
(3)	Mud guard	1	
(4)	Dust seal	1	
(5)	Snap ring	1	Install the chamfered side facing in.
(6)	Right swingarm pivot bearing	2	Replacement (page 13-24)
(7)	Swingarm pivot collar	1	
(8)	Dust seal	1	
(9)	Left swingarm pivot bearing	1	Replacement (page 13-24)
(10)	Distance collar	1	
After '93:			
(11)	Shock arm pivot collar	1	
(12)	Dust seal	2	
(13)	Needle bearing	1	Replacement (page 13-25)