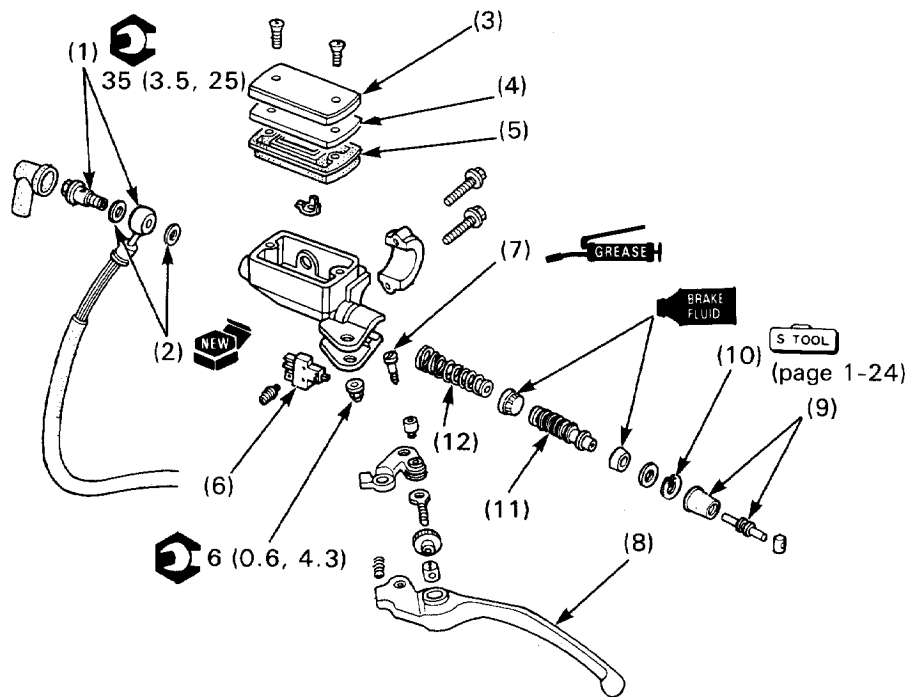


## Clutch Master Cylinder Disassembly/Assembly



## NOTE

- Replace the master piston, spring, cups, stopper plate, snap ring and boot as a set.
- The master cylinder piston, cups and spring must be installed as a set.

## Requisite Service

- Clutch fluid replacement/air bleeding (page 11-27, 28 of the Common Service manual)
- Clutch master cylinder removal/installation (page 12-3)

| Procedure                                    | Q'ty | Remarks  |
|--|------|--|
| <b>Disassembly Order</b>                     |      |  |
| (1) Clutch fluid hose bolt/clutch fluid hose | 1    | • Assembly is in the reverse order of disassembly. Refer to page 1-29 for correct routing.   |
| (2) Sealing washer                           | 2    |  |
| (3) Reservoir cover                          | 1    |  |
| (4) Diaphragm plate                          | 1    |  |
| (5) Diaphragm                                | 1    |  |
| (6) Clutch switch                            | 1    |  |
| (7) Clutch lever pivot bolt                  | 1    |  |
| (8) Clutch lever assembly                    | 1    | When installing, apply grease to the clutch lever sliding surface.   |
| (9) Push rod/boot                            | 1/1  |  |
| (10) Snap ring                               |      | <b>NOTE:</b><br>• Install the snap ring with the chamfered side facing inside.<br>• Make sure the snap ring is fully seated in the groove. |
| (11) Master piston assembly                  | 1    | Install with its tapered end toward the piston.  |
| (12) Spring                                  | 1    |  |