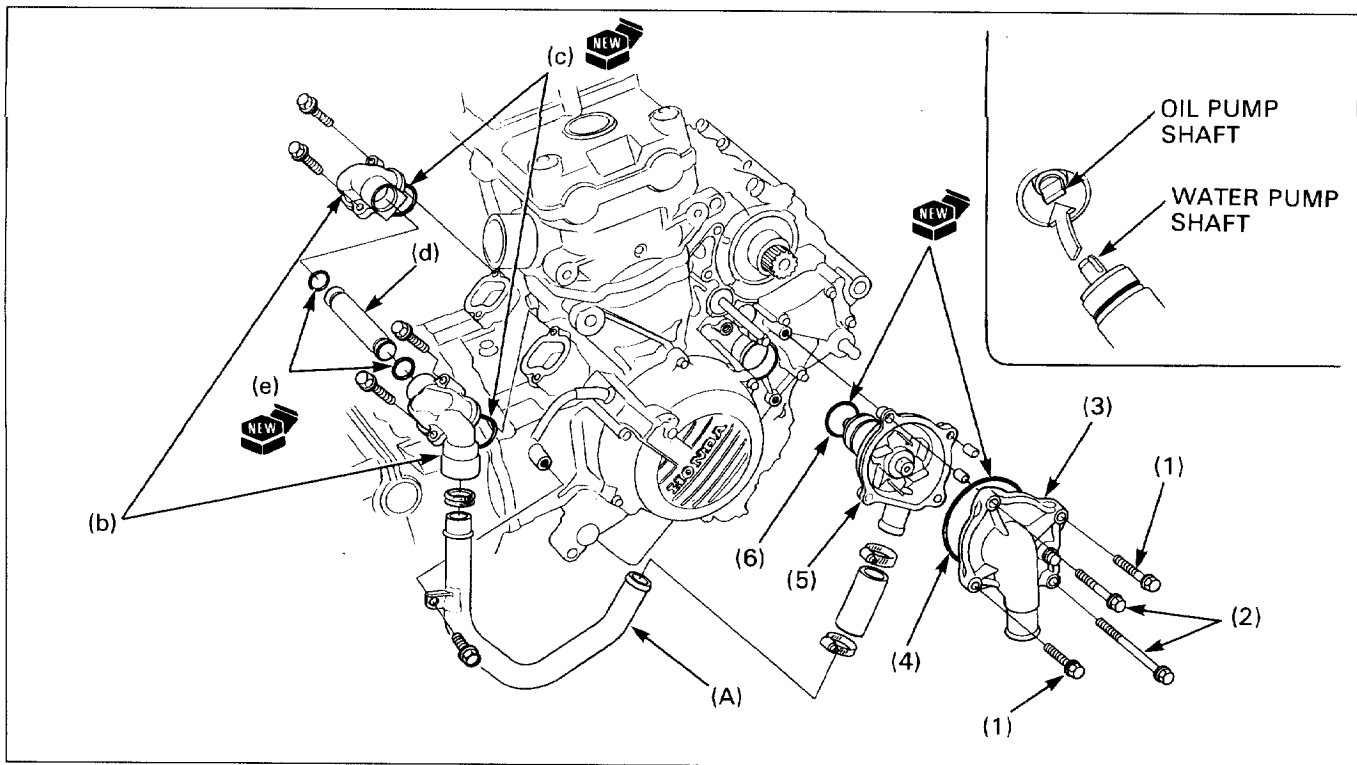


# Water Pump/Water Pipe Disassembly/Assembly



## NOTE

- If the mechanical seal is damaged, the water pump must be replaced as an assembly.

## Requisite Service

- Coolant draining (page 5-3)
- Coolant refill (section 5 of the Common Service Manual)
- Lower fairing removal/installation (page 2-7)

Procedure	Q'ty	Remarks
<b>Disassembly Order</b>		
<b>Water pump disassembly</b>		
(1) Water pump cover bolt	2	<ul style="list-style-type: none"> <li>• Assembly is in the reverse order of disassembly.</li> </ul> At installation, align the pump shaft slot with the oil pump shaft end.
(2) Water pump mounting bolt	2	
(3) Water pump cover	1	
(4) O-ring	1	
(5) Water pump body	1	
(6) O-ring	1	
<b>Water pipe disassembly</b>		
(a) Water pipe	1	Refer to page 6-4 for carburetor removal/installation.
(b) Water pipe joint	2	
(c) O-ring	2	
(d) Joint pipe	1	
(e) O-ring	2	