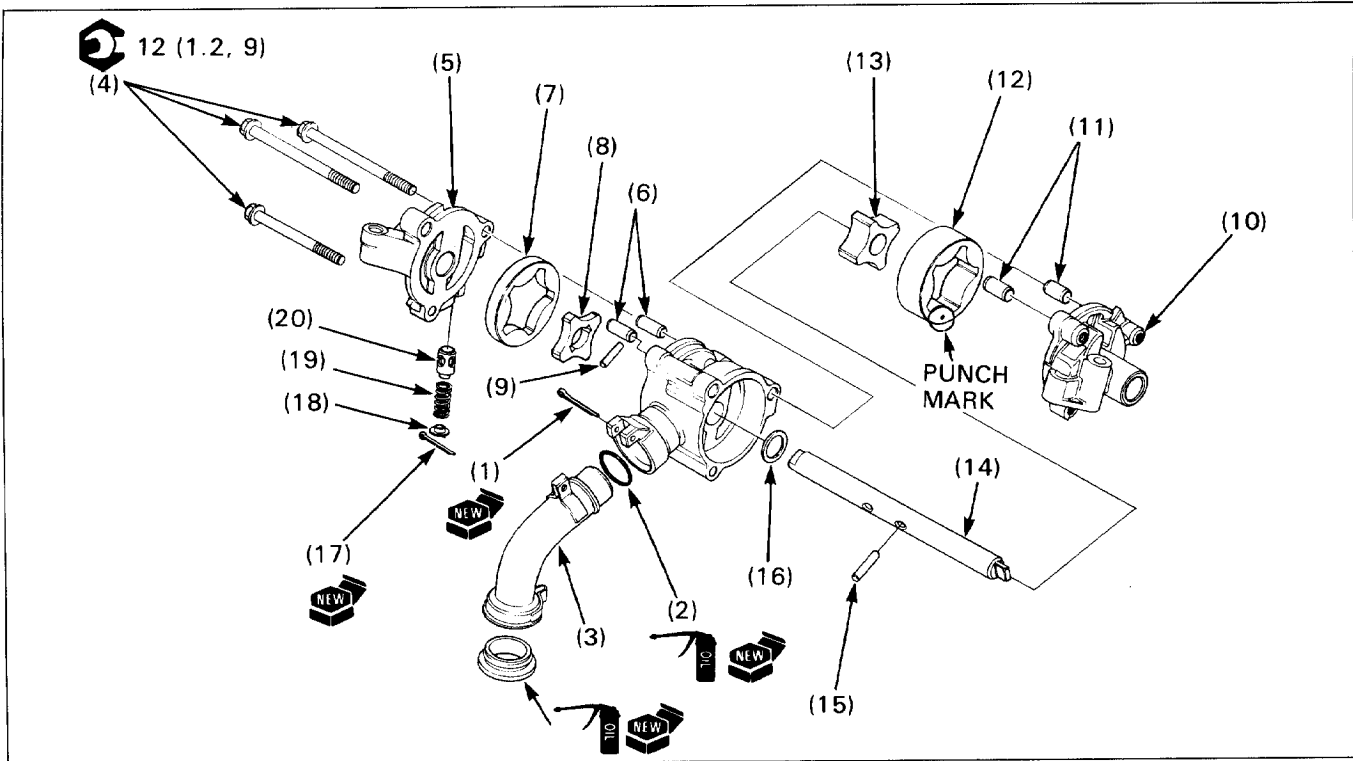


Oil Pump Disassembly/Assembly



NOTE

- Before installing them, clean all removed parts thoroughly with clean engine oil.
- Refer to section 4 of the Common Service Manual for inspection information.
- Refer to page 1-6 for specification.

Requisite Service

- Oil pump removal/installation (page 4-3)

Procedure	Q'ty	Remarks
Disassembly Order		• Assembly is in the reverse order of disassembly.
(1) Cotter pin	1	
(2) O-ring	1	
(3) Oil strainer pipe	1	
(4) Oil pump cover attaching bolt	3	
(5) Pump cover	1	
(6) Dowel pin	2	
(7) Pump outer rotor	1	
(8) Pump inner rotor	1	Install aligning the cut out with the drive pin.
(9) Drive pin	1	
(10) Feed pump cover	1	
(11) Dowel pin	1	
(12) Feed pump outer rotor	1	Install with the punch mark facing the feed pump cover.
(13) Feed pump inner rotor	1	Install aligning the cut out with the drive pin.
(14) Pump shaft	1	
(15) Drive pin	1	
(16) Washer	1	
(17) Cotter pin	1	
(18) Spring seat	1	
(19) Spring	1	
(20) Relief valve	1	