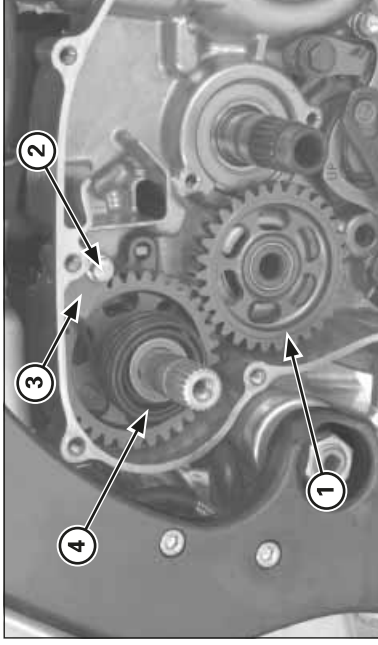


## Engine servicing



- (1) IDLE GEAR/THRUST WASHER
- (2) BOLT
- (3) STOPPER PLATE
- (4) KICKSTARTER ASSEMBLY

### Kickstarter

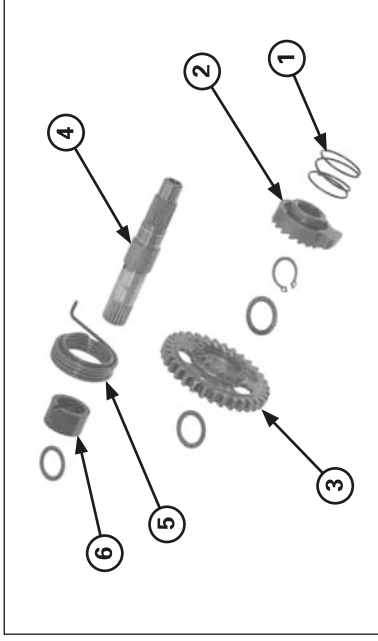
#### Removal/Disassembly

- Remove the clutch (page 3-43)
- Remove the kickstarter idle gear and thrust washer.
- Remove the bolt and return spring stopper plate.
- Unhook the return spring end from the crankcase and remove the kickstarter as an assembly.

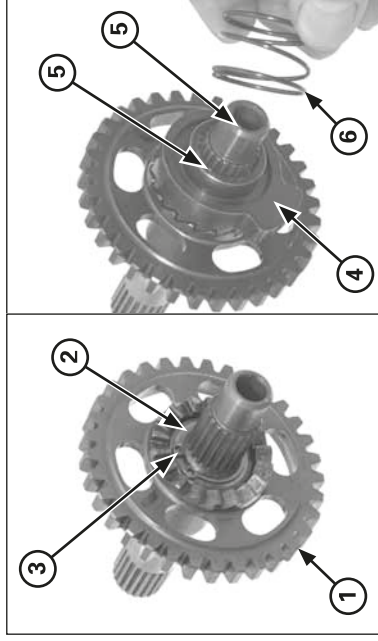
Disassemble the kickstarter.

#### Inspection

- Check the following items (specification; page 1-2):
- Return spring and ratchet spring for wear or damage.
- Needle bearing for wear or damage.
- Pinion gear I.D. and spindle O.D.
- Idle gear I.D. and bushing O.D. and I.D.
- Countershaft O.D. at the idle gear bushing.



- (1) RATCHET SPRING
- (2) STARTER RATCHET
- (3) PINION GEAR
- (4) SPINDLE
- (5) RETURN SPRING
- (6) COLLAR



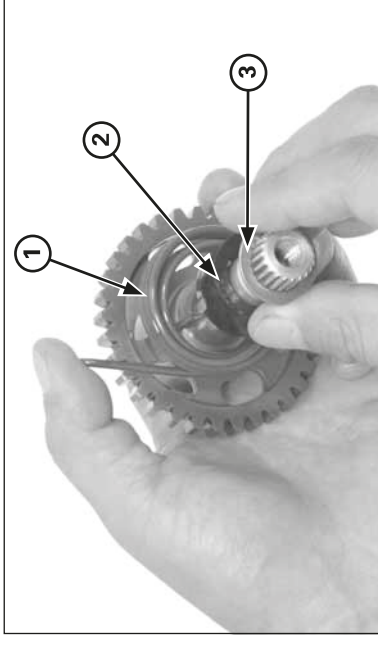
- (1) PINION GEAR
- (2) THRUST WASHER
- (3) SNAP RING
- (4) STARTER RATCHET
- (5) PUNCH MARKS
- (6) RATCHET SPRING

#### Assembly/Installation

Assemble the kickstarter as shown in the illustration above.

Install the thrust washer, pinion gear, thrust washer and snap ring.

Install the starter ratchet aligning the punch marks on the ratchet and spindle.  
Install the ratchet spring.



- (1) RETURN SPRING
- (2) COLLAR
- (3) WASHER

Install the return spring with its end into the spindle hole. Install the collar aligning its groove with the return spring end, then install the washer.