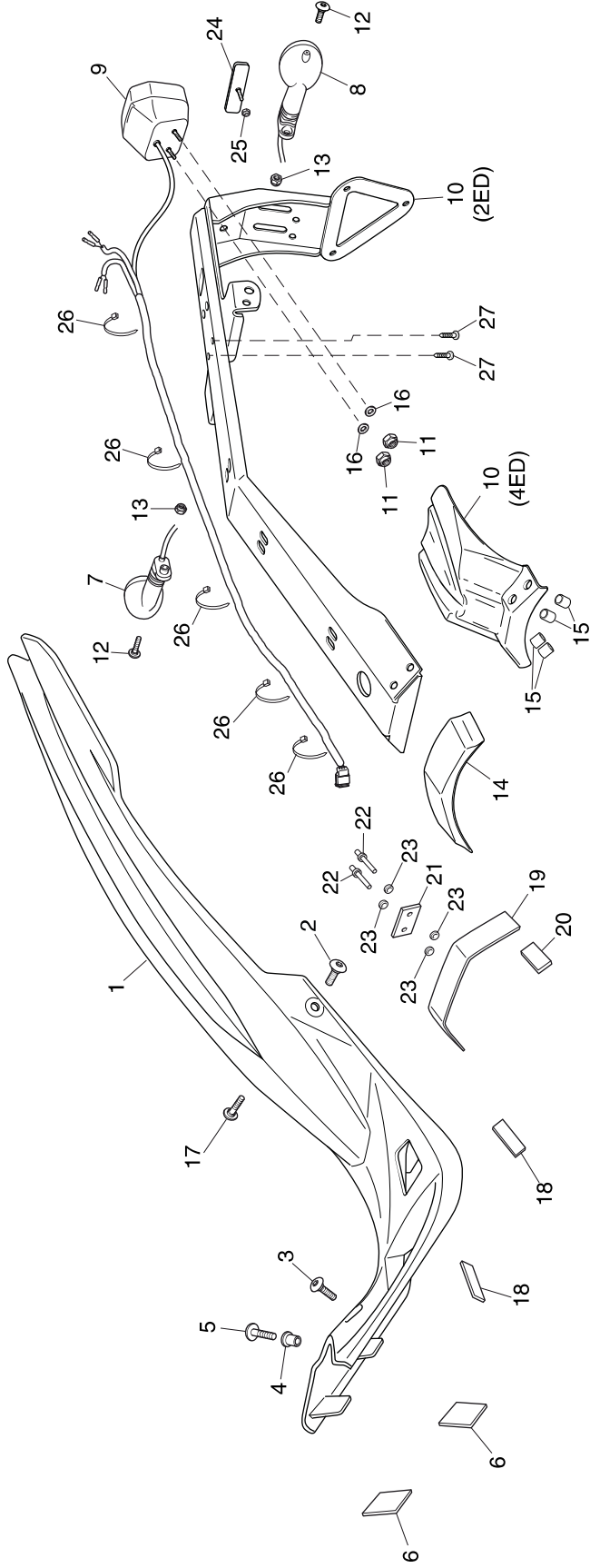


Block No.
F-14
Rear fender



Ref.No.	Part No.	Description	Qty. '20	Ref.No.	Part No.	Description	Qty. '20
1	80101-NN4-P10ZA	FENDER COMP., REAR WITHOUT DECALS [RED MOTORCYCLE]	1	13	90206-NN4-C10	NUT	2
	80101-NN4-P10ZE	FENDER COMP., REAR WITHOUT DECALS [GREY MOTORCYCLE]	1	14	80109-NN4-P10	PROTECTOR	1
	80050-NN4-P60ZA	FENDER COMP., REAR WITH DECALS [RED MOTORCYCLE]	1	15	80114-NN4-P30	COLLAR (4ED)	4
	80050-NN4-P60ZB	FENDER COMP., REAR WITH DECALS [GREY MOTORCYCLE]	1	16	90525-NN4-C10	WASHER 5 mm	2
2	90106-KY2-701	SCREW, PAN 6X11	1	17	90107-NN4-P10	BOLT 6x15	1
3	90115-NN4-000	BOLT, SPL, 6X27	1	18	64246-MEW-920	SIDE PROTECTORS	2
4	80125-NN4-000	COLLAR	1	19	80103-NN4-300	PROTECTOR	1
5	90116-MAS-E00	BOLT 6X16	1	20	80104-NN4-300	PROTECTOR	1
6	80105-NN4-300	SIDE PROTECTORS A	2	21	80102-NN4-300	PROTECTOR	1
7	33600-NN4-J10	WINKER ASSY. RIGHT REAR	1	22	90851-NN4-300	RIVET	2
8	33650-NN4-J10	WINKER ASSY. RIGHT LEFT	1	23	90503-NN4-300	WASHER	4
9	33700-NN4-J10	UNIT, TAIL LIGHT COMP.	1	24	33741-KEB-621	REAR REFLECTOR	1
10	80105-NN4-P30	BRACKET (2ED)	1	25	90205-NN4-J10	NUT	1
11	80106-NN4-P30	BRACKET (4ED)	1	26	90602-NN4-600	TIE-BAND BLACK 150mm (2ED)	5
12	90201-NN4-600	NUT	2	27	90113-NN4-L80	SCREW-TAP 4,8X9,5	2
	90108-NN4-600	WINKER, BOLT	2				