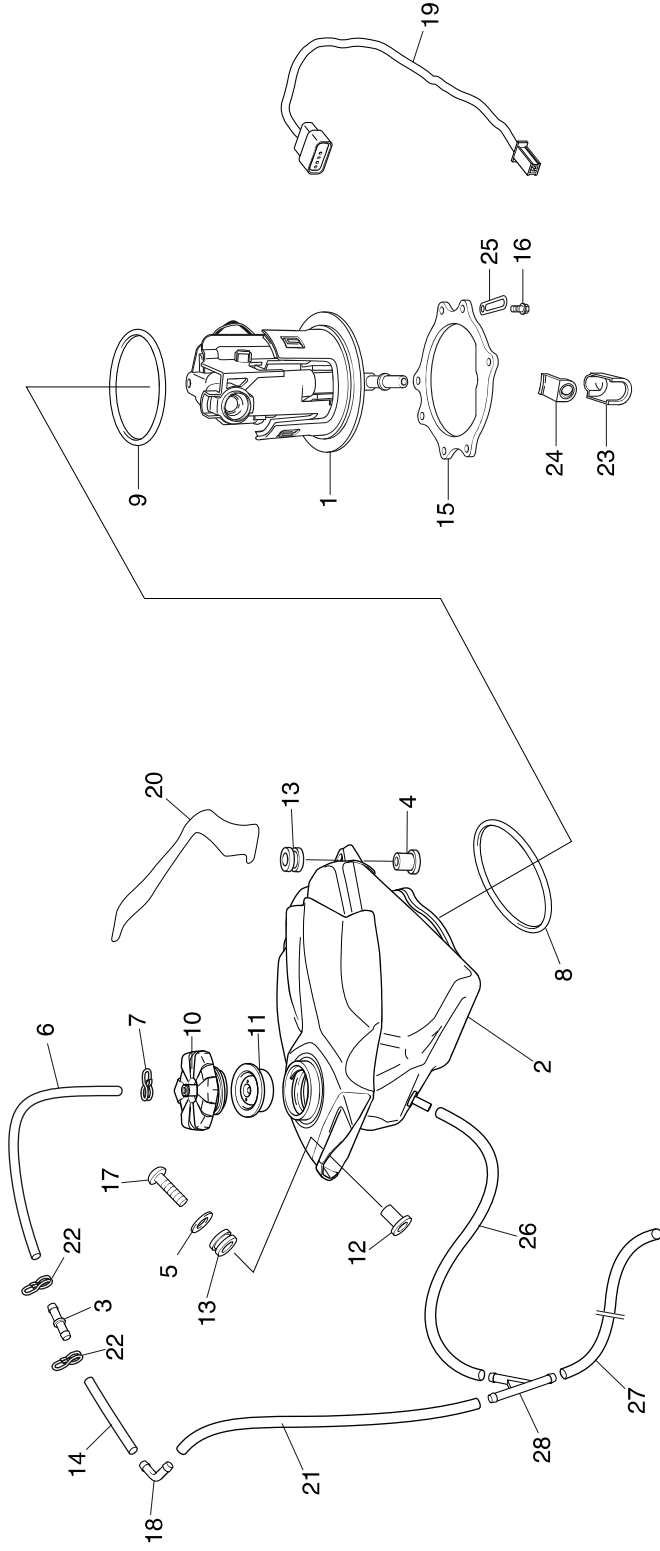


Block No.
F-13 (2ED)
 Fuel tank
 Fuel pump



Ref.No.	Part No.	Description	Qty. '20	Ref.No.	Part No.	Description	Qty. '20
1	16700-NX7-003	UNIT ASSY., FUEL PUMP.....	1	16	90106-KRN-000	BOLT,FLANGE 5X12	7
2	17500-NN4-P60ZA	SET, FUEL TANK [RED MOTORCYCLE].....	1	17	90115-NN4-000	BOLT, SPL, 6X27	1
3	17500-NN4-P60ZE	SET, FUEL TANK [GREY MOTORCYCLE].....	1	18	19114-NN4-600	JOINT 2 WAY	1
4	17625-NF4-003	VALVE.....	1	19	32103-NN4-L10	SUB HARNESS FUEL PUMP	1
5	17509-NN4-000	COLLAR, TANK SET	1	20	17507-NN4-P10	PROTECTOR FILM	1
6	90501-NN4-G00	WASHER 6 MM	1	21	17521-NN4-M10	DRAIN TUBE A	1
7	17523-NN4-G00	TUBE, FUEL CAP BREATHER.....	1	22	95002-02100	CLIP B10.....	2
8	95002-02129	CLIP B12.....	1	23	17575-MEN -A30	COVER, FUEL CONNECTOR	1
9	16712-MEN -A30	O-RING 2,4X88,4.....	1	24	17576-MEN -A30	RUBBER, FUEL CONNECTOR.....	1
10	16711-MEN-A30	O-RING 3,7X73,9.....	1	25	90106-KJ6-740	CLIP TUBE.....	1
11	17621-NN4-P10	FUEL CAP	1	26	17524-NN4-M10	DRAIN TUBE B	1
12	17624-NN4-P10	PACKING, FUEL CAP	1	27	17522-NN4-M10	DRAIN TUBE C	1
13	61104-357-000	COLLAR, FR FENDER	1	28	16180-ML6-671	3 WAY JOINT	1
14	64615-KR1-860	RUBBER, LWR COWL MOUNT	2				
15	95005-55035-20	TUBE 5,3 x 35.....	1				
16	17519-NN4-L10	PLATE,FUEL PUMP	1				