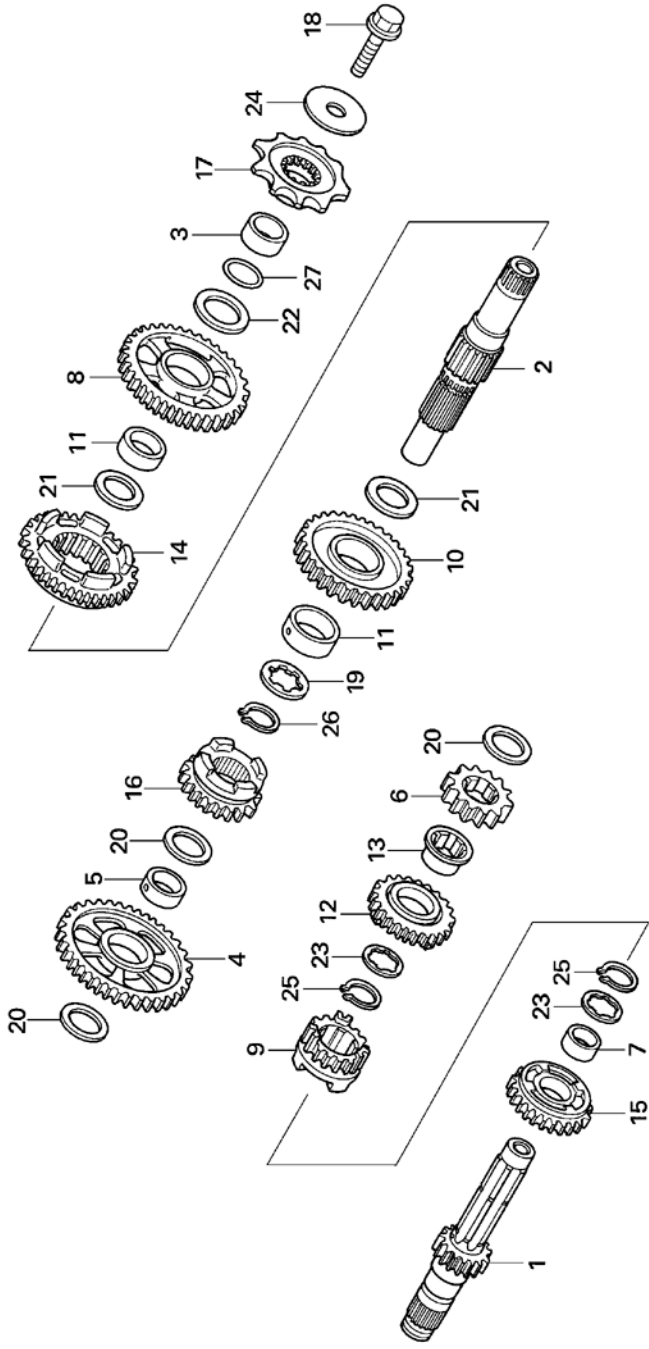


**Block No.**  
**E-13**  
**Transmission**



No.	Part Number	Description	Qty.	FRT	No.	Part Number	Description	Qty.	FRT
1	23211-NN4-L80	SHAFT, MAIN.....	1	4.1*	17	23801-NN4-000	SPROCKET, DRIVE 10T.....	1	0.3
2	23221-NN4-L80	SHAFT, COUNTER.....	1	4.1*	18	90112-413-000	BOLT, UBS 8X33.....	1	—
3	23225-KS6-000	COLLAR, C-SHAFT.....	1	0.3	19	90404-NN4-L80	WASHER, THRUST, INV 22X21X1.....	1	—
4	23411-NN4-L80	GEAR, C-LOW.....	1	4.1*	20	90446-357-000	WASHER, THRUST 17.2mm.....	3	—
5	23413-NN4-000	COLLAR, 17mm.....	1	—	21	90452-KZ4-000	WASHER, THRUST 20X30X1.....	2	—
6	23421-NN4-L80	GEAR, M-2ND.....	1	4.1*	22	90453-KZ4-000	WASHER, THRUST 20X30X1.5.....	1	—
7	23422-GB4-770	BUSH, 20X9.....	1	—	23	90461-444-000	WASHER, SPLINE 20.....	2	—
8	23431-NN4-L80	GEAR, C-2ND.....	1	4.1*	24	90501-NN4-003	WASHER, SPRING 8X33.....	1	—
9	23441-NN4-L80	GEAR, M-3RD.....	1	4.1*	25	90601-360-000	SET RING 20mm.....	2	—
10	23451-NN4-L80	GEAR, C-3RD.....	1	4.1*	26	90602-360-000	SET RING 22mm.....	1	—
11	23452-NN4-000	COLLAR, C-3RD GEAR.....	2	—	27	91351-KA3-711	O-RING, 20mm.....	1	0.3
12	23461-NN4-L80	GEAR, M-4TH.....	1	4.1*					
13	23462-NN4-000	COLLAR, M-4TH GEAR.....	1	—					
14	23471-NN4-L80	GEAR, C-4TH.....	1	4.1*					
15	23481-NN4-L80	GEAR, M-5TH.....	1	4.1*					
16	23491-NN4-L80	GEAR, C-5TH.....	1	4.1*					

\* INCLUDES: Engine removal and installation