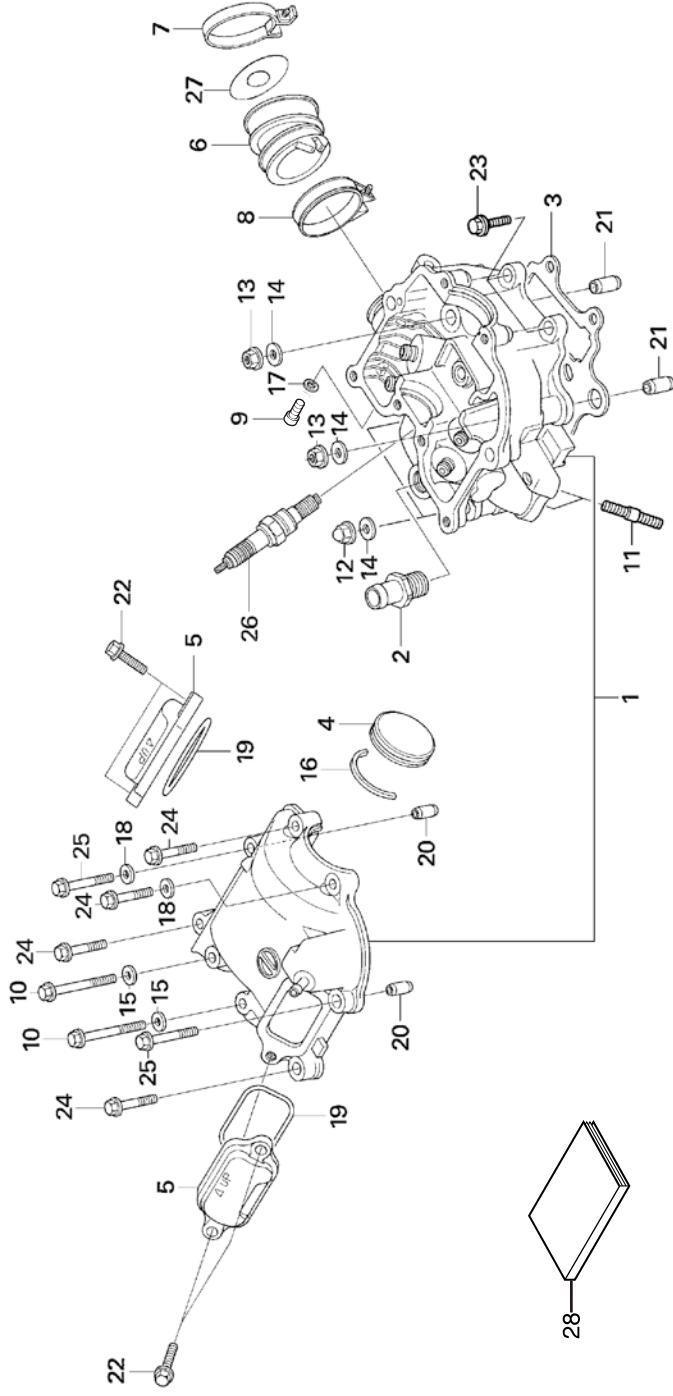


Block N.º
E-1
Cylinder head



No.	Part Number	Description	Qty.	No.	Part Number	Description	Qty.
1	12010-NN4-000	HEAD SET, CYLINDER.....	1	17	90452-323-000	WASHER, 5MM.....	1
2	12203-KA5-690	JOINT, PIPE 13.....	1	18	90463-ML7-000	WASHER, SEALING, 6.5mm.....	2
3	12251-KRN-731	GASKET, CYLINDER HEAD.....	1	19	91303-436-003	O-RING, 43X2.5.....	2
4	12312-NN4-000	CAP, CYLINDER HEAD SIDE.....	1	20	94301-08140	DOWEL PIN, 8X14.....	2
5	12351-NN4-000	COVER, TAPPET ADJ HOLE.....	2	21	94301-12200	DOWEL PIN, 12X20.....	2
6	16211-NN4-000	INSULATOR, THROTTLE BODY.....	1	22	96001-06020-00	BOLT, FLANGE, 6X20.....	4
7	16215-NN4-000	BAND, INSULATOR.....	1	23	96001-06022-00	BOLT, FLANGE, 6X22.....	2
8	16216-MCZ-000	BAND, INSULATOR A.....	1	24	96001-06028-00	BOLT, FLANGE, 6X28.....	4
9	90089-KR0-000	BOLT SOCKET 5X12.....	1	25	96001-06035-00	BOLT, FLANGE, 6X35.....	2
10	90002-NN4-000	BOLT, SPECIAL 6X50.....	2	26	98059-56916-00	SPARK PLUG, CR6EH-9.....	1
11	90041-NN4-000	BOLT, STUD 2.7X17.....	2	27	16213-NN4-J10	INSULATE PLATE (ED/2ED).....	1
12	90232-MB6-680	NUT 9MM, CAP.....	2	28	62NN4NEMH	SHOP/OWNER'S MANUAL (ENGLISH).....	1
13	90233-MM4-000	NUT FLANGE 9mm.....	2		65NN4NSMH	SHOP/OWNER'S MANUAL (ESPAÑOL).....	1
14	90401-KRN-670	WASHER, PLAIN 9mm.....	4		64NN4NGMH	SHOP/OWNER'S MANUAL (DEUTSCH).....	1
15	90441-MR1-770	WASHER, SEALING.....	2		69NN4NIMH	SHOP/OWNER'S MANUAL (ITALIANO).....	1
16	90446-NN4-000	WASHER, CAM SHAFT THRUST.....	1		63NN4NFMH	SHOP/OWNER'S MANUAL (FRANÇAIS).....	1