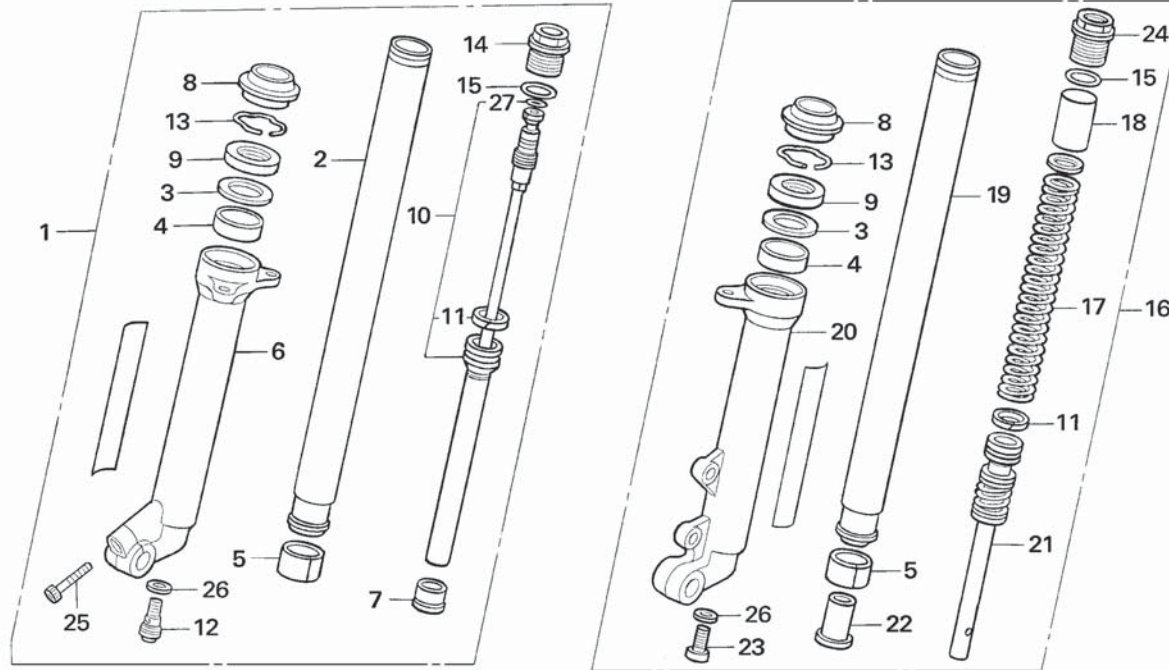


Block No.

F-7 (2E/4E)

Front fork (Showa)



Ref.No.	Part No.	Description	Qty. '15	Ref.No.	Part No.	Description	Qty. '15
1	51400-NN4-G11	FORK ASSY., RH. FR	1	16	51500-NN4-G11	FORK ASSY., LH. FR.....	1
2	51410-NN4-003	PIPE COMP., RH. FR FROK.....	1	17	51501-NN4-003	SPRING, FR FORK.....	1
3	51412-NN4-003	SEAL SPACER.....	2	18	51502-NN3-821	COLLAR, SPRING	1
4	51414-NN4-G01	BUSH, GUIDE	2	19	51510-NN4-003	PIPE COMP., LH. FR FROK	1
5	51415-NN4-G01	BUSH, SLIDE	2	20	51520-NN3-821	CASE, L. BOTTOM	1
6	51420-NN4-003	CASE, RH. BOTTOM	1	21	51530-NN4-003	CYLINDER COMP., FR.....	1
7	51421-NN3-821	PLATE, CENTERING	1	22	51531-NN3-821	PIECE, OIL LOCK	1
8	51422-NN3-821	SEAL, DUST.....	2	23	51541-NN3-821	BOLT,CENTER	1
9	51425-NN3-821	SEAL, OIL.....	2	24	51550-NN4-G01	BOLT COMP., LH. FR FORK.....	1
10	51430-NN4-G01	DAMPER COMP., RH. FR	1	25	90116-383-721	BOLT, SOCKET, 8mm	1
11	51437-MN5-003	RING, PISTON	2	26	90544-KS7-003	WASHER, SPECIAL.....	2
12	51441-NN4-G01	BOLT COMP., RH. CENTER	1	27	91311-MR7-003	O-RING.....	1
13	51447-MK7-671	RING, OIL SEAL STOP	2				
14	51450-NN4-G01	BOLT, R. FR FORK.....	1				
15	51458-NN3-821	O-RING.....	2				