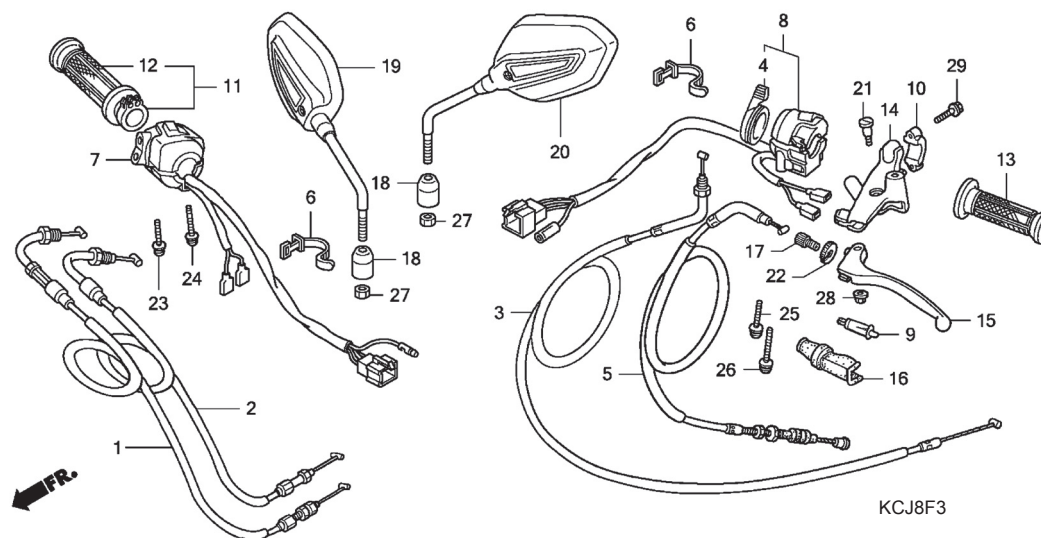


F - 3

Handle Lever / Cable / Mirror



KCJ8F3

| Bagian yang diservice | F.R.T. | Nomor Petunjuk | Nomor Part | Uraian Part | Jumlah | Nomor Serie | Catatan |
|----------------------------------|--------|----------------|----------------|--------------------------------------|--------|-------------|---------|
| CABLE, THROTTLE..... | 0.6 | 1 | 17910-KCJ-660 | CABLE COMP. A, THROTTLE | 1 | | |
| .NOTE: Same time for two units | | 2 | 17920-KCJ-660 | CABLE COMP. B, THROTTLE | 1 | | |
| CABLE, CHOKE..... | 0.3 | 3 | 17950-KCJ-660 | CABLE COMP., CHOKE | 1 | | |
| CABLE, CLUTCH..... | 0.2 | 4 | 17962-KCJ-690 | LEVER, CHOKE | 1 | | |
| SWITCH, STARTER KILL..... | 0.6 | 5 | 22870-KCJ-660 | CABLE COMP., CLUTCH | 1 | | |
| SWITCH, WINKER..... | 0.6 | 6 | 32161-404-000 | BAND B1, WIRE | 2 | | |
| SWITCH, CLUTCH..... | 0.2 | 7 | 35150-KCJ-661 | SWITCH ASSY., LIGHTING KILL | 1 | | |
| GRIP, THROTTLE..... | 0.2 | 8 | 35200-KCJ-661 | SWITCH ASSY., WINKER | 1 | | |
| GRIP, HANDLE :RIGHT..... | 0.2 | 9 | 35330-413-003 | SWITCH COMP., FR. LEVER | 1 | | |
| GRIP, HANDLE :LEFT..... | 0.1 | 10 | 45517-166-006 | HOLDER, MASTER CYLINDER | 1 | | |
| BRACKET, HANDLE LEVER :LEFT..... | 0.2 | 11 | 53140-KCJ-660 | GRIP COMP., R. | 1 | | |
| LEVER, HANDLE :LEFT..... | 0.1 | 12 | 53165-MR4-900 | GRIP, R. HANDLE | 1 | | |
| LEVER, HANDLE :BOTH..... | 0.2 | 13 | 53166-MR4-900 | GRIP, L. HANDLE | 1 | | |
| | | 14 | 53172-KT7-751 | BRACKET, HANDLE LEVER | 1 | | |
| | | 15 | 53178-KEH-600 | LEVER COMP., L. HANDLE | 1 | | |
| | | 16 | 53180-425-010 | BOOT, HANDLE LEVER | 1 | | |
| | | 17 | 53192-349-690 | BOLT, CLUTCH WIRE ADJUSTING | 1 | | |
| | | 18 | 88113-KCJ-660 | CAP, LOCK NUT | 2 | | |
| | | 19 | 88210-KCJ-660 | MIRROR COMP., R. | 1 | | |
| | | 20 | 88220-KCJ-660 | MIRROR COMP., L. | 1 | | |
| | | 21 | 90113-438-000 | BOLT, L. STEERING HANDLE LEVER PIVOT | 1 | | |
| | | 22 | 90321-MR8-000 | NUT, FIXING | 1 | | |
| | | 23 | 93892-05020-07 | SCREW-WASHER, 5X20 | 1 | | |
| | | 24 | 93892-05025-07 | SCREW-WASHER, 5X25 | 1 | | |
| | | 25 | 93892-05035-07 | SCREW-WASHER, 5X35 | 1 | | |
| | | 26 | 93892-05045-07 | SCREW-WASHER, 5X45 | 1 | | |
| | | 27 | 94002-10000-0S | NUT, HEX., 10MM | 2 | | |
| | | 28 | 94050-06000 | NUT, FLANGE, 6MM | 1 | | |
| | | 29 | 96001-06022-07 | BOLT, FLANGE, 6X22 | 2 | | |

06.2006