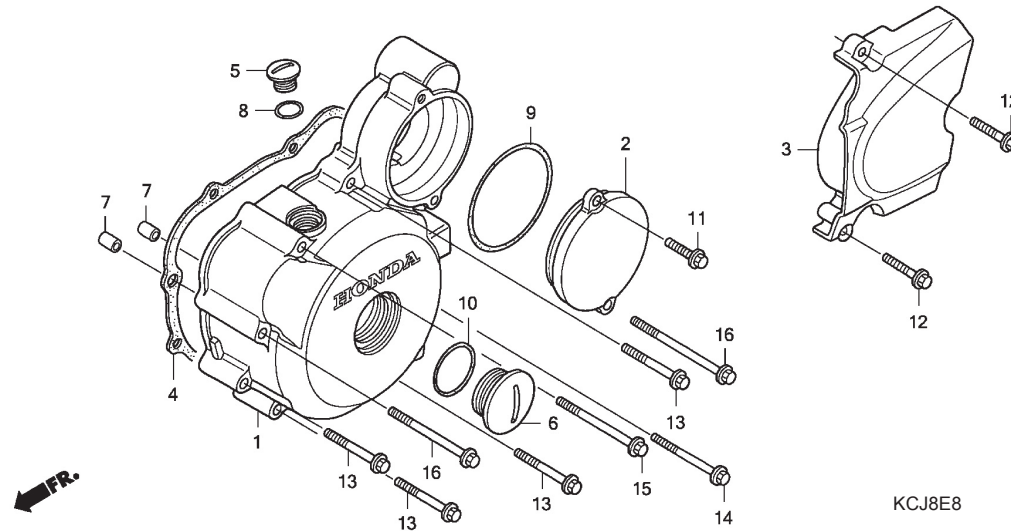


E - 8

Left Crankcase Cover



Bagian yang diservice	F.R.T.	Nomor Petunjuk	Nomor Part	Uraian Part	Jumlah	Nomor Serie	Catatan
COVER, CRANKCASE :LEFT.....	0.7	1	11341-KCJ-670	COVER, L. CRANKCASE	1	2IN	
COVER, REDUCTION GEAR.....	0.1		11341-KCJ-950	COVER, L. CRANKCASE	1	IN	
COVER, CRANKCASE :LEFT REAR....	0.1	2	11355-KCJ-670	COVER, REDUCTION GEAR	1	2IN	
GASKET, CRANKCASE COVER :			11355-KCN-000	COVER, REDUCTION GEAR	1	IN	
LEFT.....	0.5	3	11360-KCJ-660	COVER COMP., L. RR. CRANKCASE	1	IN	
			11360-KCJ-670	COVER COMP., L. RR. CRANKCASE	1	2IN	
		4	11395-KCN-000	GASKET, L. COVER	1		
		5	90084-KCJ-670	CAP, A.C. GENERATOR	1	2IN	
			90084-KCJ-710	CAP, A.C. GENERATOR	1	IN	
		6	90087-KCJ-670	CAP, 30MM	1	2IN	
			90087-KCJ-710	CAP, 30MM	1	IN	
		7	90703-HC4-000	DOWEL PIN, 10X14	2		
		8	91303-377-000	O-RING, 13.8X2.5	1		
		9	91304-MN5-003	O-RING, 63X3 (ARAI)	1		
		10	91356-KEH-910	O-RING, 30MM	1		
		11	96001-06020-00	BOLT, FLANGE, 6X20	1		
		12	96001-06025-00	BOLT, FLANGE, 6X25	2		
		13	96001-06040-00	BOLT, FLANGE, 6X40	4		
		14	96001-06050-00	BOLT, FLANGE, 6X50	1		
		15	96001-06060-00	BOLT, FLANGE, 6X60	1		
		16	96001-06070-00	BOLT, FLANGE, 6X70	2		