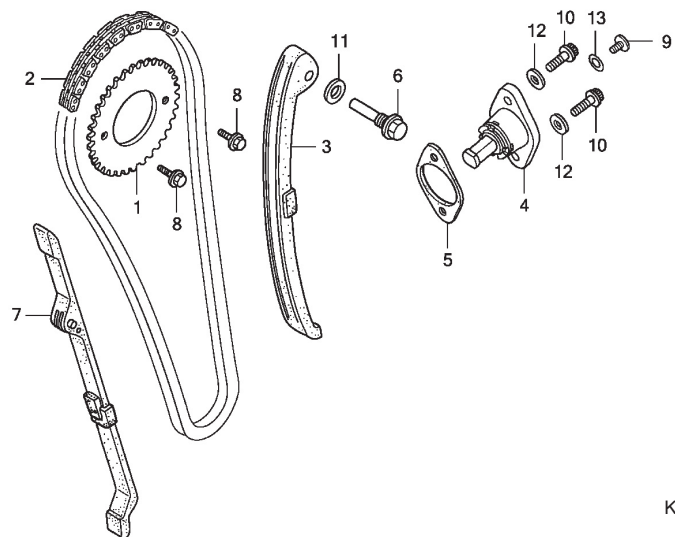


E - 3

Cam Chain / Tensioner



KCJ8E3

| Bagian yang diservice | F.R.T. | Nomor Petunjuk | Nomor Part | Uraian Part | Jumlah | Nomor Serie | Catatan |
|----------------------------|--------|----------------|---------------|---------------------------------|--------|-------------|---------|
| SPROCKET, CAM | 0.7 | 1 | 14321-KEH-900 | SPROCKET, CAM (34T) | 1 | | |
| CHAIN, CAM | 1.5 | 2 | 14401-KCJ-711 | CHAIN, CAM (102L) | 1 | | |
| TENSIONER, CAM CHAIN | 1.6 | 3 | 14500-KBB-900 | TENSIONER, CAM CHAIN | 1 | | |
| LIFTER, TENSIONER | 0.4 | 4 | 14520-KCJ-661 | LIFTER ASSY., TENSIONER | 1 | | |
| GUIDE, CAM CHAIN | 2.7 | 5 | 14523-KEH-910 | GASKET, TENSIONER LIFTER | 1 | | |
| | | 6 | 14535-437-000 | BOLT, CAM CHAIN TENSIONER PIVOT | 1 | | |
| | | 7 | 14550-KCJ-710 | GUIDE, CAM CHAIN | 1 | | |
| | | 8 | 90002-KW1-900 | BOLT, FLANGE, 6X10 | 2 | | |
| | | 9 | 90005-KY7-000 | SCREW, PAN, 6X6 | 1 | | |
| | | 10 | 90071-MG8-000 | BOLT, FLANGE SOCKET, 6X16 | 2 | | |
| | | 11 | 90475-703-000 | WASHER C, 8MM | 1 | | |
| | | 12 | 90488-425-000 | WASHER, SEALING, 6MM | 2 | | |
| | | 13 | 91306-MG3-000 | O-RING, 9.5X1.5 | 1 | | |