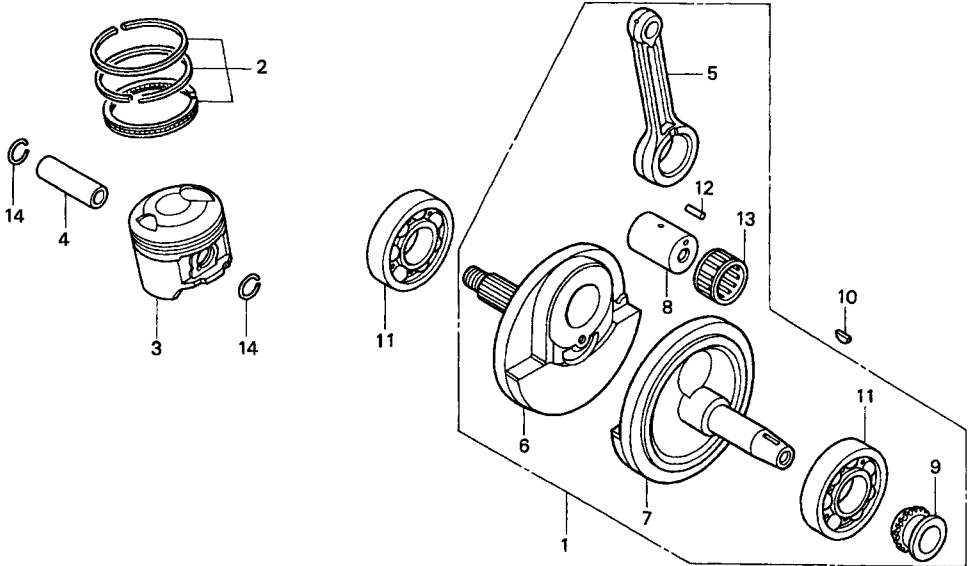


E - 11

Crankshaft/Piston



KEHG - GL156S

No.	Part Number	Description	Q'ty
1	13000-KEH-900	CRANKSHAFT COMP	1
2	13011-KCJ-305	RING SET, PISTON (STD.)	1
	13021-KCJ-305	RING SET, PISTON (0.25)	1
	13031-KCJ-305	RING SET, PISTON (0.50)	1
3	13101-KEH-900	PISTON (STD.)	1
	13102-KEH-305	PISTON (0.25)	1
	13103-KEH-305	PISTON (0.50)	1
4	13111-440-000	PIN, PISTON	1
5	13201-KCN-300	ROD, CONNECTING	1
6	13311-KEH-900	CRANKSHAFT, R	1
7	13321-KEH-900	CRANKSHAFT, L	1
8	13380-KCN-300	PIN COMP., CRANK	1
9	14311-KN6-931	SPROCKET, TIMING (17T)	1
10	90701-HB6-010	KEY, WOODRUFF, 25X14X4	1
11	91001-KCN-003	BEARING, RADIAL BALL, 28X72X18	2
12	91102-KC6-003	ROLLER, 4X14.8 A (RED)	18
	91103-KC6-003	ROLLER, 4X14.8 B (BLUE)	18
	91104-KC6-003	ROLLER, 4X14.8 C (WHITE)	18
13	91105-KW3-003	RETAINER, CONNECTING ROD LARGE END	1
14	94601-15000	CLIP, PISTON PIN, 15MM	2