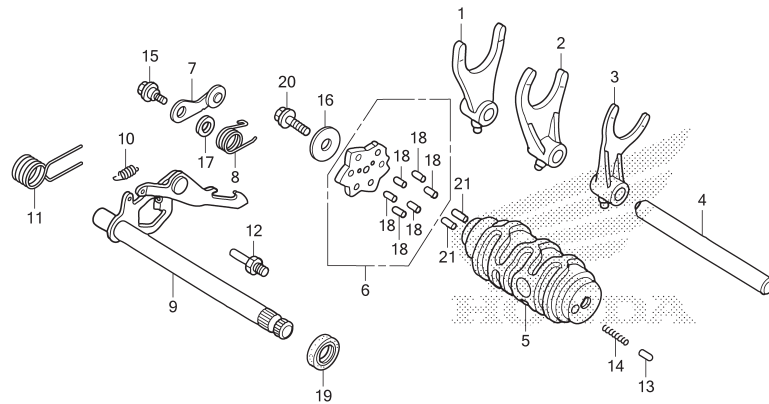


E-19

GEAR SHIFT DRUM



| No. Ref. | L.O.N. | (Nomor ref. relatif) Deskripsi | F.R.T. |
|----------|--------|---|--------|
| 1 | 210112 | (2) FORK, GEARSHIFT | 5,2 |
| 5 | 2101A9 | .TERMASUK: Penurunan dan pemasangan mesin DRUM, GEARSHIFT | 5,2 |
| 6 | 2101D6 | .CATATAN: Waktu sama untuk dua unit atau lebih PLATE, GEARSHIFT DRUM STOPPER | 1,0 |
| 7 | 210125 | (8) STOPPER ATAU SPRING, SHIFT DRUM | 0,9 |
| 9 | 210122 | (11) SPINDLE, GEARSHIFT | 1,1 |
| 19 | 1101F9 | OIL SEAL, GEARSHIFT SPINDLE | 1,1 |

| No. Ref. | No. Part | Deskripsi | Jumlah CBR150R F | No. Seri | Kode Parts Catalog |
|----------|----------------|---------------------------------------|------------------------|----------|--------------------|
| 1 | 24211-KPP-901 | FORK, R. GEARSHIFT | 1 | | |
| 2 | 24212-KPP-901 | FORK, CENTER GEARSHIFT | 1 | | |
| 3 | 24213-KPP-901 | FORK, L. GEARSHIFT | 1 | | |
| 4 | 24241-KPP-901 | SHAFT, GEARSHIFT FORK | 1 | | |
| 5 | 24301-K45-N00 | DRUM, GEARSHIFT | 1 | | |
| 6 | 24410-K45-N00 | PLATE COMP., SHIFT DRUM STOPPER | 1 | | |
| 7 | 24430-KGH-901 | STOPPER COMP., GEARSHIFT DRUM | 1 | | |
| 8 | 24436-KTY-D30 | SPRING, GEARSHIFT DRUM STOPPER | 1 | | |
| 9 | 24610-KPP-900 | SPINDLE COMP., GEARSHIFT | 1 | | |
| 10 | 24641-KBP-900 | SPRING, GEARSHIFT ARM | 1 | | |
| 11 | 24651-KTY-D30 | SPRING, GEARSHIFT RETURN | 1 | | |
| 12 | 24652-035-000 | PIN, SHIFT RETURN SPRING | 1 | | |
| 13 | 35751-KPH-900 | CAP, CHANGE SWITCH CONTACT | 1 | | |
| 14 | 35752-KPH-901 | SPRING, CHANGE SWITCH CONTACT | 1 | | |
| 15 | 90022-MG8-001 | PIVOT, SHIFT DRUM STOPPER ARM | 1 | | |
| 16 | 90402-KW7-901 | WASHER, THRUST, 6MM | 1 | | |
| 17 | 90435-HB3-000 | WASHER, 6.1MM | 1 | | |
| 18 | 91111-KW7-900 | ROLLER, 4X10.8 | 6 | | |
| 19 | 91209-KWC-901 | OIL SEAL, 12X22X7 | 1 | | |
| 20 | 95701-06016-00 | BOLT, FLANGE, 6X16 | 1 | | |
| 21 | 96220-30086 | ROLLER, 3X8.5 | 2 | | |

