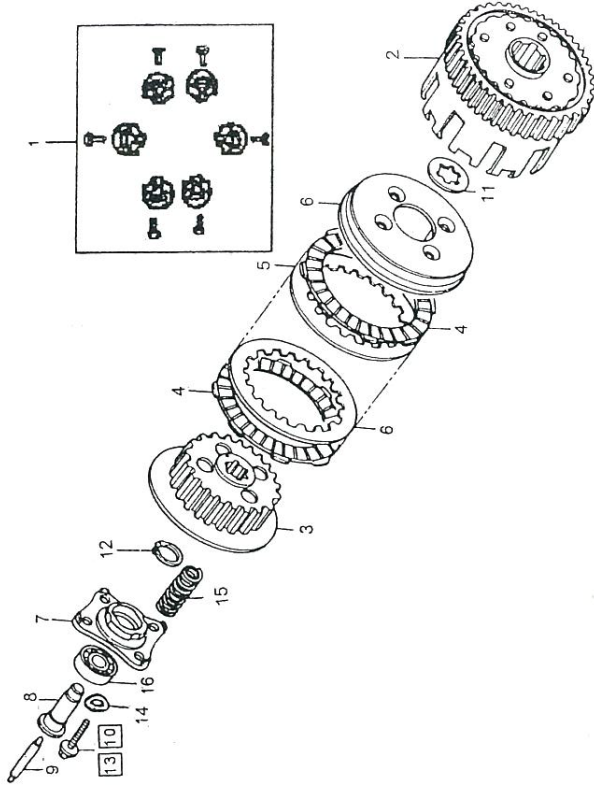


E - 5

CLUTCH



Service item	F.R.T.
OUTER COMP., CLUTCH.....	1.0
CENTER COMP., CLUTCH	
DISK, CLUTCH-FRICTION (INC. RELATIVE PART) (ONE OR ALL)	
PLATE, CLUTCH-PRESSURE PLATE, CLUTCH-LIFTER.....	0.8
SPRING 11, CLUTCH (ONE OR ALL)	
ROD, CLUTCH-LIFTER.....	0.7

REF. NO.	PART NO.	DESCRIPTION	REQ'D. NO. OLD	REQ'D. NO. NEW	REF. NO.	PART NO.	DESCRIPTION	REQ'D. NO. OLD	REQ'D. NO. NEW
1	04915-437-P00	DAMPER SET, CLUTCH	1	1					
2	22100-324-000	OUTER COMP. CLUTCH	1	1					
3	22100-KCS-650	OUTER COMP. CLUTCH	-	-					
3	22121-KCS-650	CENTER COMP. CLUTCH	-	-					
4	22201-GF6-000	DISK CLUTCH FRICTION	5	5					
4	22201-166-000	DISK CLUTCH FRICTION	-	-					
5	22311-KN4-680	PLATE CLUTCH	4	4					
6	22350-107-010	PLATE CLUTCH PRESSURE	1	1					
7	22361-107-000	PLATE CLUTCH LIFTER	1	1					
8	22366-383-000	PIN CLUTCH LIFTER GUIDE	1	1					
9	22850-355-000	ROD CLUTCH LIFTER	1	1					
10	90050-357-000	BOLT SPECIAL FLANGE 6X22	-	-					
11	90461-107-000	WASHER B, SPLINE, 20MM	1	1					
12	90605-200-000	SET RING, 20MM	1	1					
13	92025-06025-0A	BOLT HEX, 6X25	4	4					
14	94101-06000	WASHER PLAIN 6MM	4	4					
15	95014-75110	SPRING 11, CLUTCH	4	4					
16	96100-6006000	BALL BEARING, 6001	1	1					
	96100-60010-00	BALL BEARING, 6001	-	-					