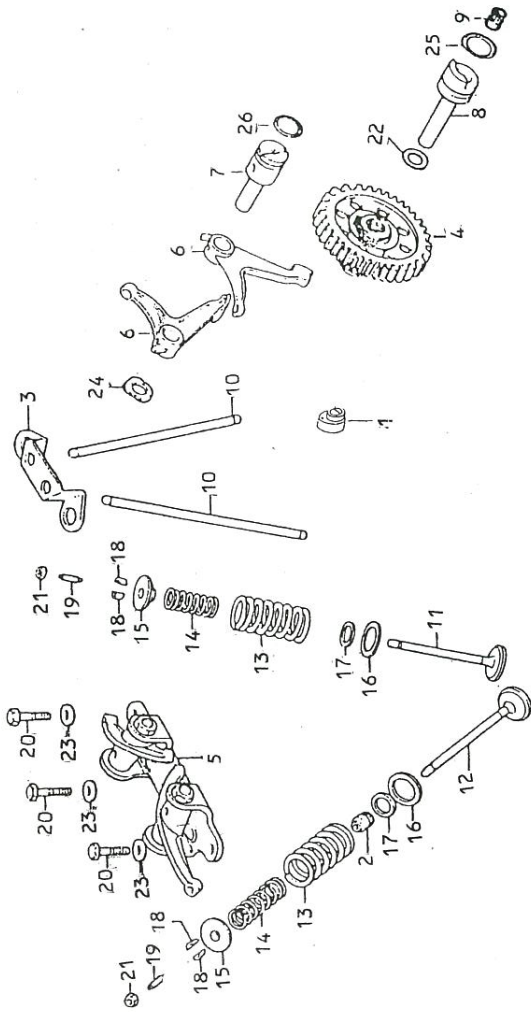


E - 2

CAMSHAFT • VALVE



Service item	F.R.T.
CAMSHAFT COMP.	2.2
HOLDER COMP., VALVE ROCKER ARM.	0.6
•ROD, PUSH (ONE OR ALL)	
FOLLOWER, CAM.	1.7
(ONE OR ALL)	
SPRING, VALVE INNER.	1.6
(ADD 0.1 FOR EACH.)	
(INC. RELATIVE PART)	
VALVE.	1.8
(ADD 0.2 FOR EACH.)	
(INC. REFACING)	
(EXC. VALVE GUIDE REPLACEMENT)	

REF. NO.	PART NO.	DESCRIPTION	REQ'D. NO.		REQ'D. NO.	
			OLD	NEW	OLD	NEW
1	04914-397-P00	LOBE, CAM	1	1		
2	12208-413-003	SEAL, VALVE STEM	1	1		
3	12215-397-020	GUIDE PUSH ROD	1	1		
4	14100-397-030	CAMSHAFT COMP	1	1		
5	14100-KCS-650	CAMSHAFT COMP	1	1		
6	14400-KCS-650	HOLDER COMP VALVE ROCKER ARM				
7	14421-KCS-650	FOLLOWER CAM				
8	14422-397-000	SHAFT CAM FOLLOWER	1	1		
9	14423-397-000	SHAFT CAM GEAR	1	1		
10	14425-KCS-650	SHAFT CAM GEAR	1	1		
11	14440-KCH-770	SPRING CAMSHAFT	1	1		
12	14711-383-000	ROD PUSH	2	2		
13	14711-KCS-650	VALVE IN	1	1		
14	14721-383-000	VALVE IN	1	1		
15	14721-383-000	VALVE EX	1	1		
16	14721-KCS-650	VALVE EX	1	1		
17	14751-324-000	SPRING VALVE OUTER	2	2		
18	14761-324-000	SPRING VALVE INNER	2	2		
19	14771-107-020	RETAINER VALVE SPRING	2	2		
16	14775-107-000	SEAT VALVE SPRING OUTER			2	2
17	14776-107-010	SEAT VALVE SPRING INNER				2
18	14781-MB4-000	COTTER VALVE				4
19	90012-415-000	SCREW TAPPET ADJUSTING			2	2
20	93201-080280A	BOLT FR. BRAKE STOPPER ARM				3
21	90206-250-000	NUT TAPPET ADJUSTING			2	2
22	90428-958-000	WASHER B, THRUST, 14MM			1	1
23	90442-028-000	WASHER SEALING 8MM			4	4
24	90444-397-000	WASHER WAVE 12MM			1	1
25	91318-590-000	O-RING 2.5X20			1	1
26	91333-KE5-003	O-RING 17.0X2.5			1	1