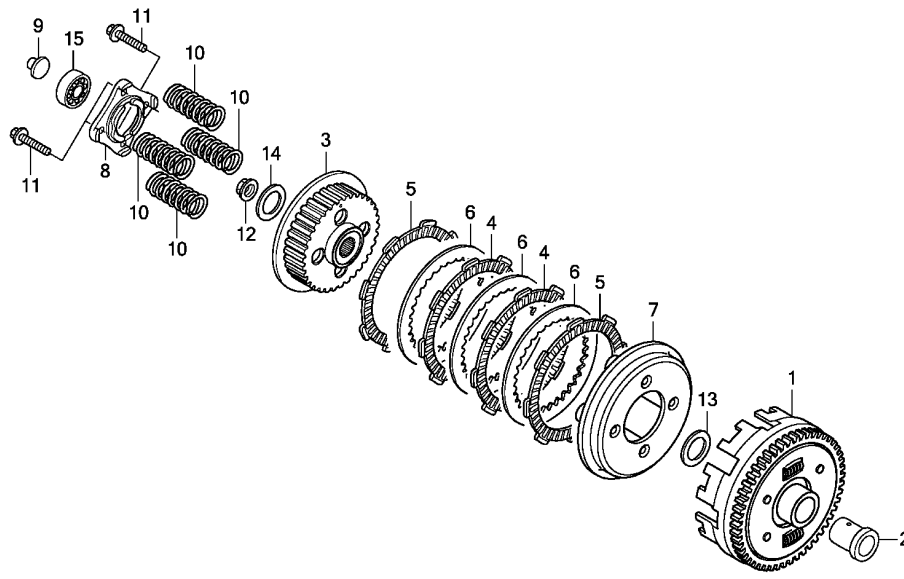


E-6-1

CLUTCH(GLH125SH)

F15



Ref. No.	L.O.N.	(Relative ref. Number) Description	F.R.T.
1	2121A0	OUTER, CLUTCH	0.7
3	212112	CENTER, CLUTCH	0.7
4	2121A1	DISC, CLUTCH FRICTION	0.7
.NOTE: Same time for two units or more			
7	2121A3	PLATE, CLUTCH PRESSURE	0.7
8	2121A4	PLATE, CLUTCH LIFTER	0.4
9	2121B6	ROD, CLUTCH LIFTER	0.3
10	212107	SPRING, CLUTCH	0.4
.NOTE: Same time for two units or more			
15	2121B4	BEARING, CLUTCH LIFTER	0.3

KVC5E0601

FR.

Ref. No.	Part No.	Description	Reqd. QTY				Serial No.	Parts catalogue code
			GLH125	1/2SH	1/2/3SH	1/2SH		
			7	8	A	C		
1	22100-KVX-700	OUTER COMP., CLUTCH(67T)	-	-	-	1		
2	22115-KSP-910	GUIDE, CLUTCH OUTER	-	-	-	1		
3	22120-KTE-910	CENTER, CLUTCH	-	-	-	1		
4	22201-KTT-900	DISK, CLUTCH FRICTION	-	-	-	2		
5	22202-KTT-900	DISK, CLUTCH FRICTION	-	-	-	2		
6	22321-KTT-900	PLATE, CLUTCH	-	-	-	3		
7	22355-KTE-910	PLATE, CLUTCH PRESSURE	-	-	-	1		
8	22361-KTT-900	PLATE, CLUTCH LIFTER	-	-	-	1		
9	22366-KRM-840	ROD, CLUTCH LIFTER	-	-	-	1		
10	22401-KRM-840	SPRING, CLUTCH	-	-	-	4		
11	90008-KTT-900	BOLT, FLANGE, 6X25	-	-	-	4		
12	90202-KRM-840	NUT, SPECIAL FLANGE, 14MM ...	-	-	-	1		
13	90405-KTT-900	WASHER, PLAIN, 17MM	-	-	-	1		
14	90501-KPT-A00	WASHER, 14.1X29X2.8	-	-	-	1		
15	96100-60030-00	BEARING, RADIAL BALL, 6003 ..	-	-	-	1		

2