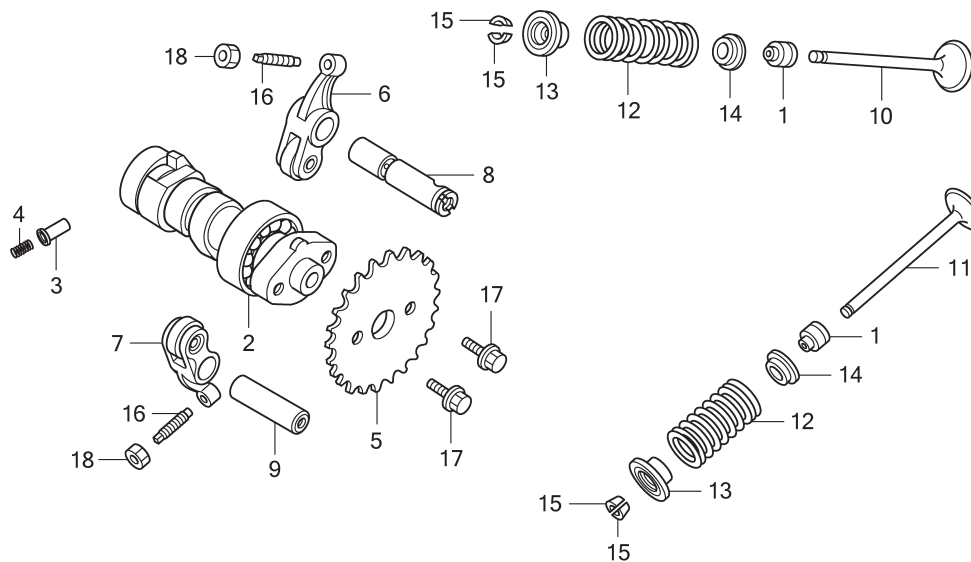


E - 4 Camshaft / Valve



KYTIE0400

Ref No.	(Relative ref. Number) Description	F.R.T.	Ref No.	Part No.	Description	QTY	Notes
2	CAMSHAFT.....	1,4	1	12209-GB4-681	SEAL, VALVE STEM.....	2	
	.TERMASUK: Penyetelan klep		2	14100-KVY-900	CAMSHAFT COMP.....	1	
5	SPROCKET, CAM	0,8	3	14125-KVY-900	PLUNGER, CAM SETTING.....	1	
6	(9) ARM, INTAKE VALVE ROCKER.....	1,9	4	14126-KPH-901	SPRING, PLUNGER.....	1	
	.TERMASUK: Penyetelan klep		5	14321-KVY-900	SPROCKET, CAM (34T).....	1	
7	(9) ARM, EXHAUST VALVE ROCKER... ..	1,9	6	14430-KVY-900	ARM COMP., IN. VALVE ROCKER.....	1	
	.TERMASUK: Penyetelan klep		7	14440-KVY-900	ARM COMP., EX. VALVE ROCKER.....	1	
	ARM, VALVE ROCKER		8	14451-KVY-900	SHAFT, IN. ROCKER ARM.....	1	
	:UNTUK 1 KENDARAAN	1,9	9	14461-KVB-900	SHAFT, EX. ROCKER ARM.....	1	
	.TERMASUK: Penyetelan klep		10	14711-KVY-900	VALVE, IN.....	1	
10	VALVE, INTAKE(ONE)	2,2	11	14721-KVY-900	VALVE, EX.....	1	
	.TERMASUK: Skir klep		12	14751-KVY-900	SPRING, VALVE.....	2	
11	VALVE, EXHAUST(ONE)	2,2	13	14771-GB4-680	RETAINER, VALVE SPRING.....	2	
	.TERMASUK: Skir klep		14	14775-KVY-900	SEAT, VALVE SPRING.....	2	
	VALVE :UNTUK 1 KENDARAAN.....	2,4	15	14781-MA6-000	COTTER, VALVE.....	4	
	.TERMASUK: Skir klep		16	90012-333-000	SCREW, TAPPET ADJUSTING.....	2	
12	(1,13,14,15)		17	90083-GB6-911	BOLT, KNOCK, 5MM.....	2	
	SPRING AND/OR STEM SEAL,		18	90206-001-000	NUT, TAPPET ADJUSTING.....	2	
	INTAKE VALVE(ONE).....	2,0					
	SPRING AND/OR STEM SEAL,						
	EXHAUST VALVE(ONE).....	2,0					
	SPRING AND/OR STEM SEAL,						
	VALVE :UNTUK 1 KENDARAAN	2,1					