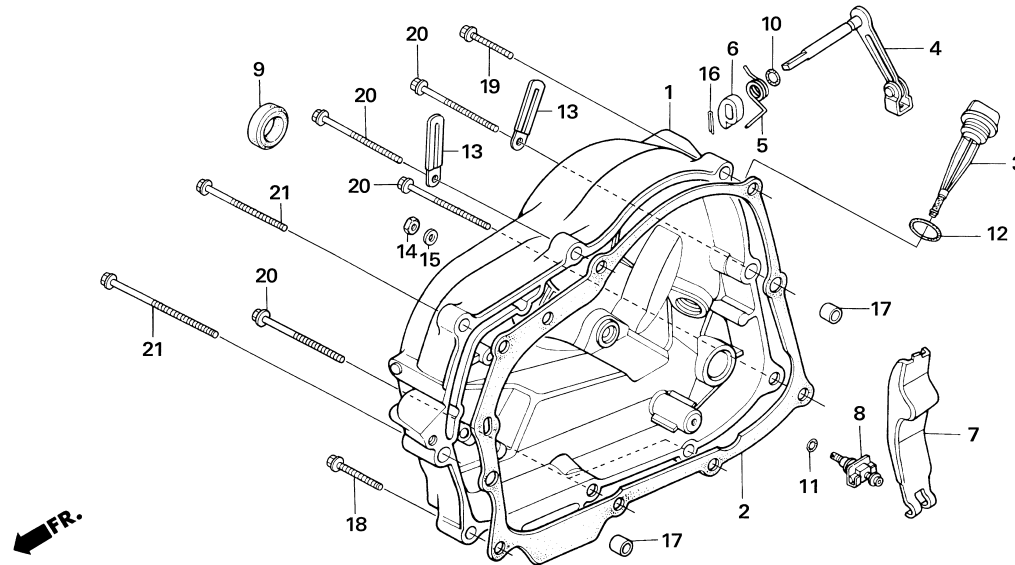


Block No.

E-6
RIGHT CRANKCASE COVER

2006 NSF100



Ref. No.	Part No.	Description	Reqd. No.	Remarks
1	11330-GN1-872	COVER COMP., R. CRANKCASE	1	
2	11393-KN4-750	GASKET, R. CRANKCASE COVER	1	
3	15650-KA9-680	GAUGE, OIL LEVEL	1	Secure the gauge with wire, according to the regulation
• 4	22810-NX2-000	LEVER COMP., CLUTCH	1	
5	22815-149-000	SPRING, CLUTCH LEVER	1	
6	22821-116-000	CAM, CLUTCH LIFTER.....	1	
7	22830-436-000	LEVER, CLUTCH ADJUSTING.....	1	
8	22831-436-000	SCREW COMP., CLUTCH ADJUSTING	1	
9	91204-286-003	OIL SEAL, 18X29X7	1	
10	91301-027-000	O-RING, 6.8X1.9.....	1	
11	91301-704-000	O-RING, 6MM	1	
12	91307-035-000	O-RING, 18X3.....	1	
13	91410-679-000	CLIP, 2X60.....	2	
14	94001-06300-0S	NUT, HEX., 6MM	1	
15	94101-06000	WASHER, PLAIN, 6MM	1	
16	94201-20150	PIN, SPLIT, 2.0X15	1	
17	94301-08140	DOWEL PIN, 8X14	2	
18	96001-06035-00	BOLT, FLANGE, SH, 6X35	1	
19	96001-06040-00	BOLT, FLANGE, SH, 6X40	1	
20	96001-06080-00	BOLT, FLANGE, SH, 6X80	5	
21	96001-06100-00	BOLT, FLANGE, SH, 6X100	2	