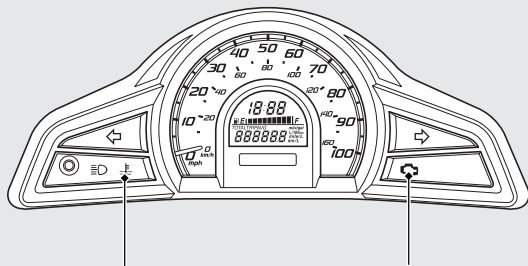



Indicators

If one of these indicators does not come on when it should, have your dealer check for problems.

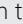


High coolant temperature indicator

Comes on briefly when the ignition switch is turned to the ON position with the engine stop switch in the  (Run) position.

If it comes on while riding:  **P.83**

PGM-FI (Programmed Fuel Injection) malfunction indicator lamp (MIL)

Comes on briefly when the ignition switch is turned to the ON position with the engine stop switch in the  (Run) position.

If it comes on while engine is running:

 **P.84**