

# Vehicle Identification

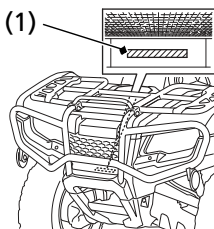
---

## Serial Numbers

The VIN and engine serial number may be required when ordering replacement parts. You may record these numbers in the Quick Reference section at the rear of this manual.

The VIN (1) is stamped on the front of the frame.  
Remove the radiator cap lid (page 142).

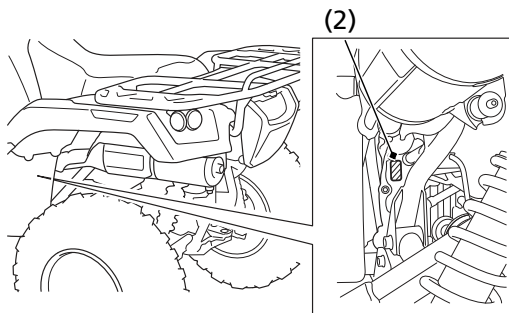
### FRONT



(1) VIN

The engine number (2) is stamped on the upper side of the rear crankcase.

### REAR



(2) engine number