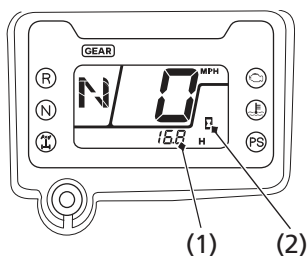


# Indicators & Displays

## Hour meter

The hour meter (1) shows accumulated hours while the ignition switch is ON (I) with the hour meter mark (2). The hour meter provides accurate service period information for initial and regular maintenance. The hour meter locks at 99,999.9 when the read-out exceeds 99,999.9.



(1) hour meter

(2) hour meter mark