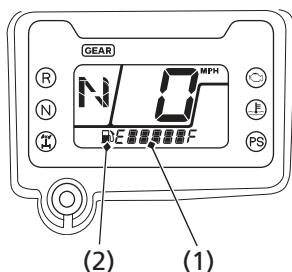


# Indicators & Displays

## Fuel Gauge

The fuel gauge (1) shows the approximate fuel supply available with the fuel mark (2). The fuel tank capacity is:

3.88 US gal (14.7 ℓ)



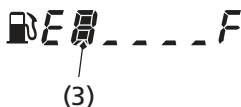
(1) fuel gauge

(2) fuel mark

Regardless of what mode the display is in, when the fuel level reaches only 1st segment (3), the display will automatically switch to the fuel gauge display. You should refuel as soon as possible.

The amount of fuel remaining when the fuel gauge reaches the 1st segment is approximately:

1.82 US gal (6.9 ℓ)



(3) 1st segment