

Emission Control Systems

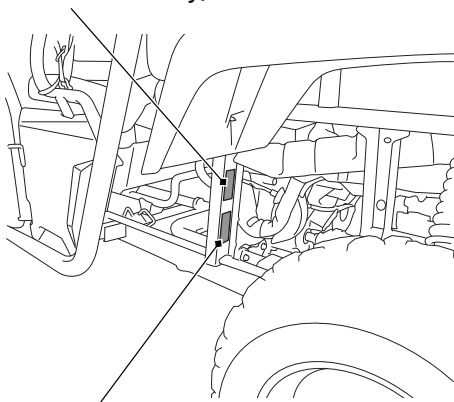
Exhaust Emission Requirements

The U.S. Environmental Protection Agency (EPA), the California Air Resources Board (CARB), and Environment and Climate Change Canada (ECCC) require that your Honda comply with applicable emissions standards during its useful life, when operated and maintained according to the instructions provided.

The Vehicle Emission Control Information Label is attached on the left side of the frame, located under the cargo carrier.

LEFT SIDE

vehicle emission control information label
(Canada model only)



vehicle emission control information label