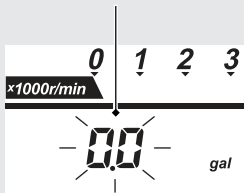


Reserve fuel consumption display

When the 1st (E) segment of the fuel gauge starts flashing, the odometer, tripmeter, fuel mileage meter and fuel consumption meter switches to the reserve fuel consumption. You should refill the tank as soon as possible.

When "---.-" is displayed, go to your dealer for service.

Reserve fuel consumption display



- Flashes from "0.0" gal (US gal) or L (liter).
 - ▶ If you change the display to odometer, tripmeter, fuel mileage meter and fuel consumption meter and so on **➡ P.22**, it will automatically return to the reserve fuel consumption display if the buttons are not pressed after for about 10 seconds.

After refueling more than the reserve amount, the display returns to the ordinary display.