

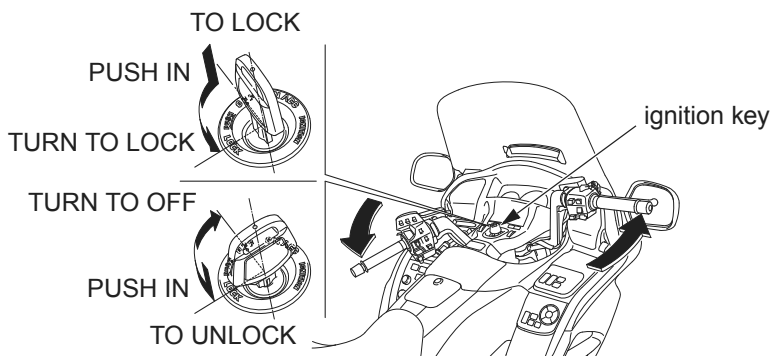
Parking

1. Look for a level parking area. If you can't park on a paved surface, make sure the ground surface is firm.

If you must park on a hill, leave the transmission in gear and position the rear tire against the curb at a 45 degree angle.

Make sure flammable materials such as dry grass or leaves do not come in contact with the exhaust system when parking your motorcycle. Refer to *Catalytic Converters*, [page 267](#).

2. Use the side or center stand to support the motorcycle while parked.
 - To lower the side stand, use your foot to guide it down. Remember that lowering the side stand with the transmission in gear will stop the engine, even if the clutch lever is pulled in. That is a function of the side stand ignition cut-off system.
 - Check that the side stand is down all the way. The side stand indicator only indicates that the side stand ignition cut-off system ([page 71](#)) is activated.
 - To lower the center stand, stand on the left side of the motorcycle. Hold the passenger handgrip attached to the seat. Press down on the tip of the stand with your right foot and, simultaneously, pull up and back on the passenger handgrip.
3. Use the steering lock, which locks the handlebar in place. Turn the handlebar all the way to the left or right. Push in on the ignition key and turn it to LOCK.
Remove the key.
(To unlock the steering lock, insert and push the key in and turn it to the right to the OFF position.)



(cont'd)