

Comfort & Convenience Adjustment

Windscreen Height Adjustment

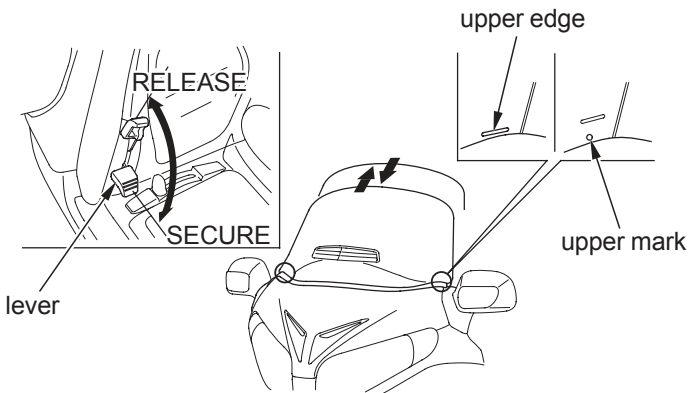
The windscreen adjuster has 6 positions.

You can adjust your windscreen height slightly higher or lower.

If possible, we recommend you adjust your windscreen height to below eye level for better visibility.

To Adjust Windscreen Height

FRONT



1. Pull both levers up to release the windscreen.
2. To raise:
Move the windscreen up to the desired position.
To lower:
Move the windscreen up to the upper mark (O), lower it all the way (to reset the ratchet mechanism), then raise it to the desired position.
3. On both sides, align the mark on the windscreen with the upper edge of the instrument panel.
4. Push the levers down to secure the windscreen.