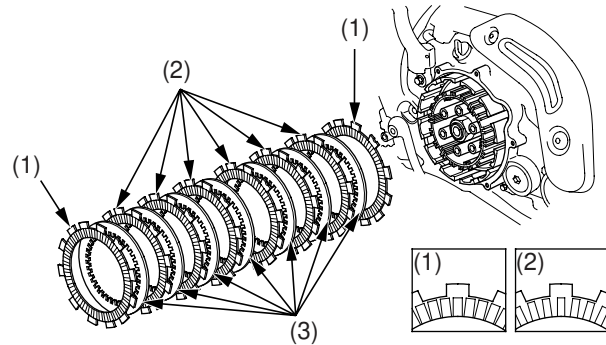


## Clutch System

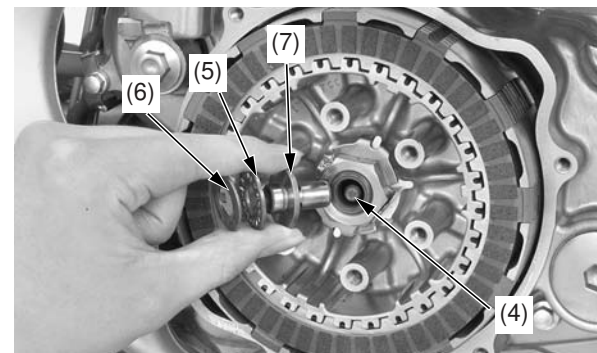
### Clutch Disc/Plate Installation

1. Coat the clutch disc A (1), B (2) and plates (3) with clean transmission oil.
2. Starting and ending with the two clutch disc A, alternately install the six clutch disc B and seven clutch plates.



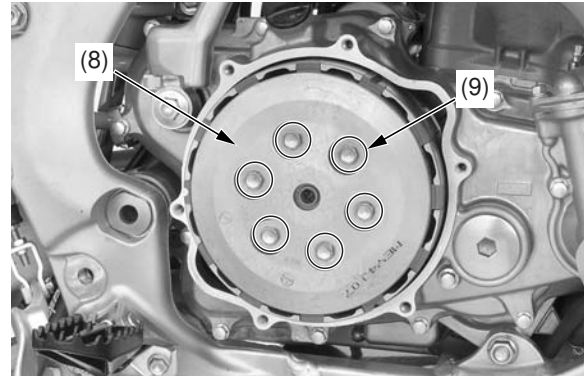
- (1) clutch disc A  
(2) clutch disc B  
(3) clutch plates

3. Apply oil to the clutch lifter rod (4).
4. Insert the clutch lifter rod into the mainshaft.
5. Apply transmission oil to the needle bearing (5) and washer (6) and install them to the clutch lifter (7).
6. Install the clutch lifter onto the rod.



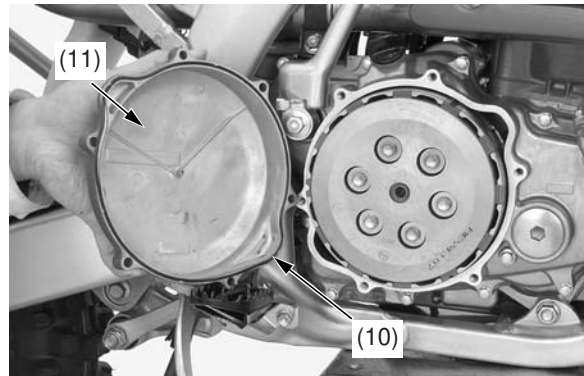
- (4) clutch lifter rod  
(5) needle bearing  
(6) washer  
(7) clutch lifter

7. Install the clutch pressure plate (8).
8. Install the six clutch springs and bolts (9).
9. Tighten the bolts in a crisscross pattern in 2 or 3 steps, to the specified torque:  
12 N·m (1.2 kgf·m, 9 lbf·ft)



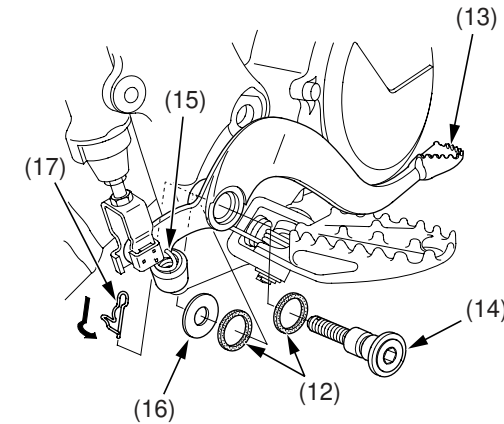
- (8) clutch pressure plate  
(9) clutch spring bolts/springs

10. Install the O-ring (10) in the groove of the clutch cover (11).
11. Install the clutch cover by tightening the six cover bolts to the specified torque:  
10 N·m (1.0 kgf·m, 7 lbf·ft)



- (10) O-ring  
(11) clutch cover

12. Lubricate the dust seals (12), rear brake pedal (13) pivot and pivot bolt (14) with Honda White Lithium Grease or equivalent.
13. Install the dust seals, washer (16) and pivot bolt and tighten the bolt to the specified torque:  
36 N·m (3.7 kgf·m, 27 lbf·ft)  
If the brake pedal return spring (15) was removed, connect it.
14. Insert the pin (17).



- (12) dust seals  
(13) rear brake pedal  
(14) pivot bolt  
(15) brake pedal return spring  
(16) washer  
(17) pin

15. Fill the crankcase with transmission oil (page 47).