

**NOTICE**

Using coolant not specified for aluminum engines or tap/mineral water can cause corrosion.

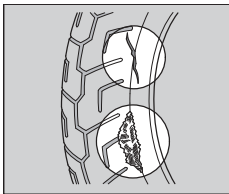
**Crankcase Breather**

Service more frequently when riding in rain, at full throttle, or after the motorcycle is washed or overturned. Service if the deposit level can be seen in the transparent section of the drain tube.

If the drain tube overflows, the air filter may become contaminated with engine oil causing poor engine performance. 2 P. 90

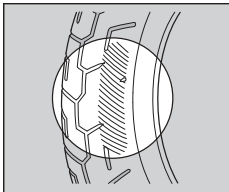
**Tires (Inspecting/Replacing)****Checking the Air Pressure**

Visually inspect your tires and use an air pressure gauge to measure the air pressure at least once a month or any time you think the tires look low. Always check air pressure when your tires are cold.

**Inspecting for Damage**

Inspect the tires for cuts, slits, or cracks that exposes fabric or cords, or nails or other foreign objects embedded in the side of the tire or the tread.

Also inspect for any unusual bumps or bulges in the side walls of the tires.

**Inspecting for Abnormal Wear**

Inspect the tires for signs of abnormal wear on the contact surface.