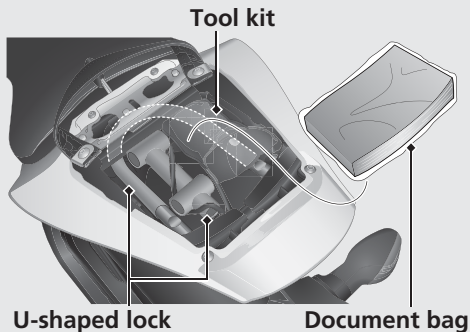


# Storage Compartment

A tool kit, and document bag are located under the rear seat. There is also space to store a U-shaped lock. Helmet holders are located underside of the rear seat.

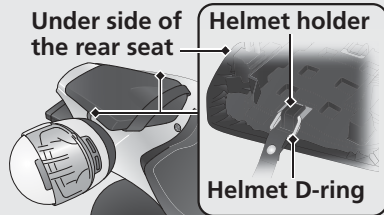


**U-shaped lock**

**Document bag**

- ▶ The U-shaped lock is held in place above the rear fender.
- ▶ Use the helmet holder only when parked.
- ▶ Some U-shaped locks may not fit in the compartment due to their size or design.

**Removing the Rear Seat** ➔ P. 66



## **⚠ WARNING**

Riding with a helmet attached to the holder can interfere with the rear wheel or suspension and could cause a crash in which you can be seriously hurt or killed.

Use the helmet holder only while parked. Do not ride with a helmet secured by the holder.