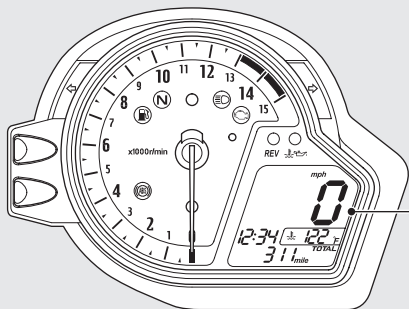


Instruments (Continued)



HESD **HESD (Honda Electronic Steering Damper) indicator**

Comes on briefly when the ignition switch is turned ON.

If it comes ON while engine is running:

➔ P.88

Low oil pressure indicator

Comes on when the ignition switch is turned ON. Goes off when the engine starts.

If it comes ON while engine is running: ➔ P.87



High coolant temperature indicator

Comes on briefly when the ignition switch is turned ON.

If it comes ON while riding:

➔ P.86

Clock (12-hour display)

To set the clock: ➔ P.25

