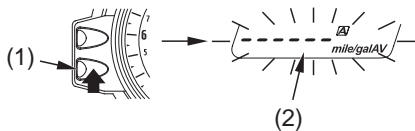


Gauges, Indicators & Displays

To Activate/Deactivate the Automatic Reset Mode

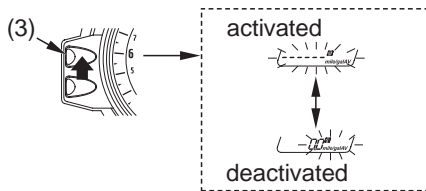
You can activate or deactivate the automatic reset by refueling mode. Initial setting is deactivated.

1. Press and hold control button B (1), and turn on the ignition switch. Keep control button B pressed until the lower segment (2) of the multi-function display starts to blink.



(1) control button B (2) lower segment

2. Press control button A (3) to activate or deactivate the automatic reset mode.



(3) control button A

3. To end the selection, press control button B. The display will return to the ordinary conditions.

The display will stop blinking automatically and return to the ordinary conditions if the button is not pressed for about 30 seconds.

As you turn off the ignition switch during the presetting procedures, the preset data just before turning off the ignition switch will be registered.