

Crankcase Breather

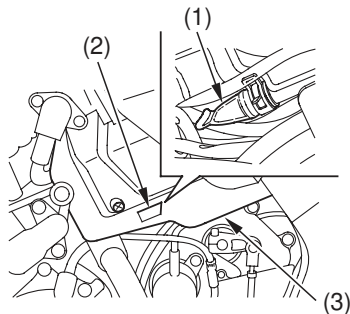
Refer to *Safety Precautions* on page 78 .

Service the crankcase breather more frequently when riding in rain or at full throttle. Service the breather if you can see deposits in the transparent section of the drain tube.

Draining

1. Check the drain tube (1) from the slit (2) on the air cleaner cover (3).
2. Remove the rear seat and front seat (pages 94 , 95).
3. Remove the left side cover (page 96).
4. Remove the air cleaner cover (page 116).

LEFT SIDE



- (1) drain tube
(2) slit
(3) air cleaner cover