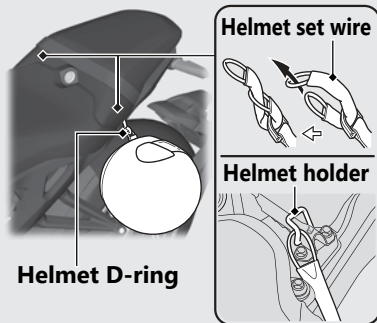


Storage Equipment

Helmet Holders

The helmet holders are located under the rear seat.

A helmet set wire is in the tool kit.



► Use the helmet holder only when parked.

► **Removing the Rear Seat** ➡ P.95

⚠ WARNING

Riding with a helmet attached to the holder can interfere with the rear wheel or suspension and could cause a crash in which you can be seriously hurt or killed.

Use the helmet holder only while parked. Do not ride with a helmet secured by the holder.

Tool Kit

The tool kit is located under the rear seat by the rubber strap.

