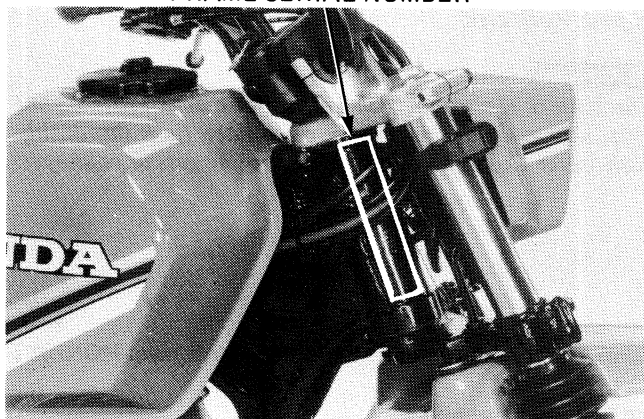


GENERAL INFORMATION

MODEL IDENTIFICATION

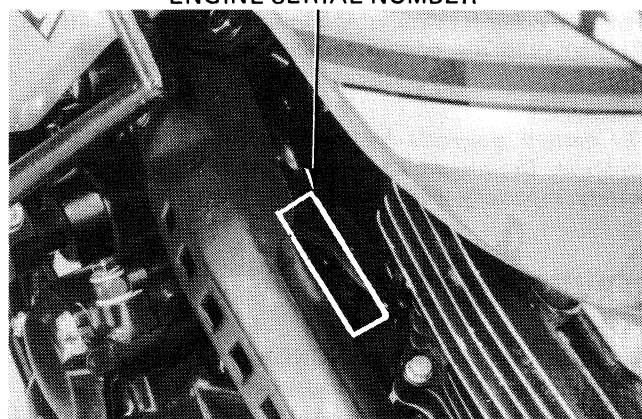


FRAME SERIAL NUMBER



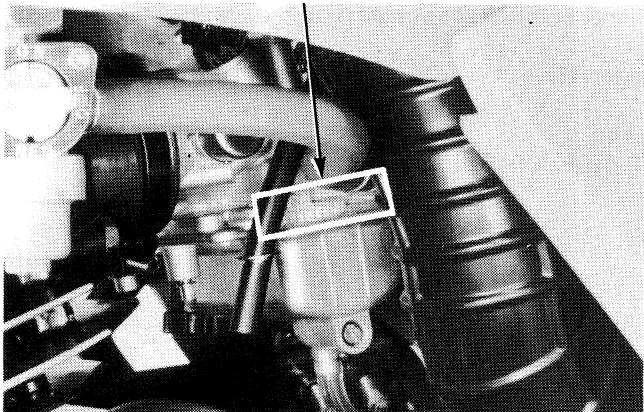
The frame serial number is stamped on the steering head right side.

ENGINE SERIAL NUMBER



The engine serial number is stamped on the upper side of the right crankcase.

CARBURETOR IDENTIFICATION NUMBER



The carburetor identification number is on the carburetor body left side.