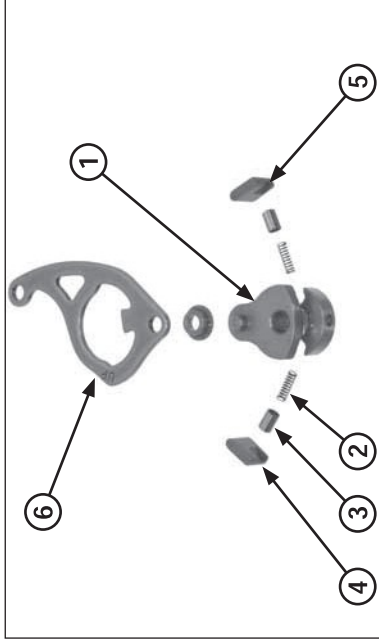


## Engine servicing



- (1) DRUM SHIFTER
- (2) SPRING
- (3) PLUNGER
- (4) RATCHET PAWL A
- (5) RATCHET PAWL B
- (6) GUIDE PLATE

### Inspection

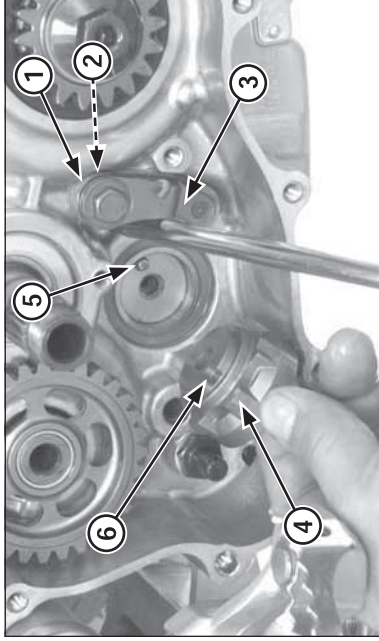
Inspect each part for wear or damage and replace if necessary.

### Installation

Apply transmission oil to the ratchet pawls, springs and plungers.  
Assemble the drum shifter, springs, plungers and ratchet pawls in the guide plate as shown.

## NOTICE

*Note the direction of the ratchet pawl A and B.*



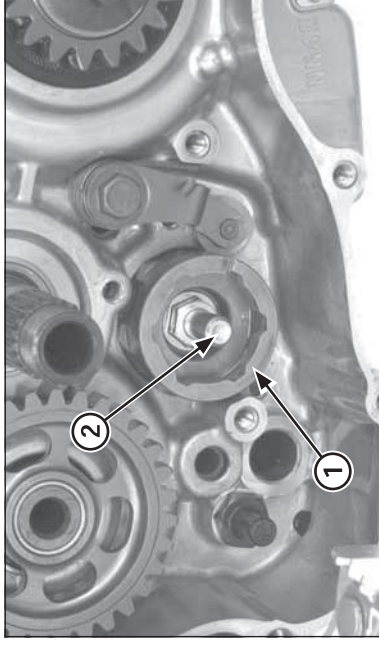
- (1) RETURN SPRING
- (2) WASHER
- (3) STOPPER ARM
- (4) DRUM CENTER
- (5) DOWEL PIN
- (6) CUT-OUT

Install the return spring, plain washer and stopper arm and tighten the stopper arm bolt to the specified torque.

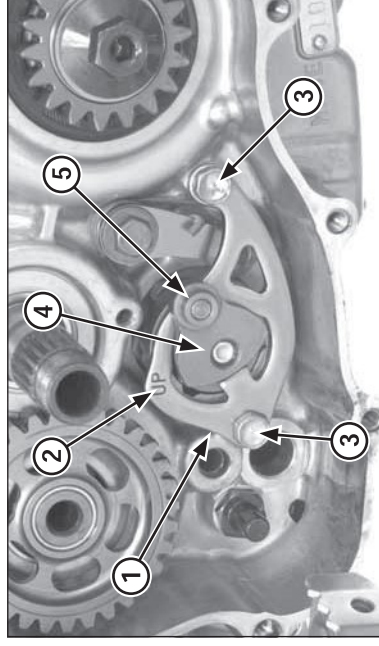
**Torque: 12 N•m (1.2 kgf•m, 9 lbf•ft)**

Install the dowel pin into the shift drum.

Install the drum center by aligning the cut-out with the dowel pin on the shift drum while holding the stopper arm with the screwdriver as shown.



- (1) SHIFT DRUM CENTER
- (2) CENTER PIN



- (1) GUIDE PLATE
- (2) "UP" MARK
- (3) BOLTS
- (4) DRUM SHIFTER
- (5) SHIFTER COLLAR

Apply a locking agent to the center bolt threads and install and tighten the drum center bolt to the specified torque.

**Torque: 22 N•m (2.2 kgf•m, 16 lbf•ft)**

Set the drum center in a position other than neutral.  
Install the drum shifter with the guide plate while holding onto the ratchet pawls.  
Install the guide plate bolts and tighten them.  
Install the shifter collar on the drum shifter.