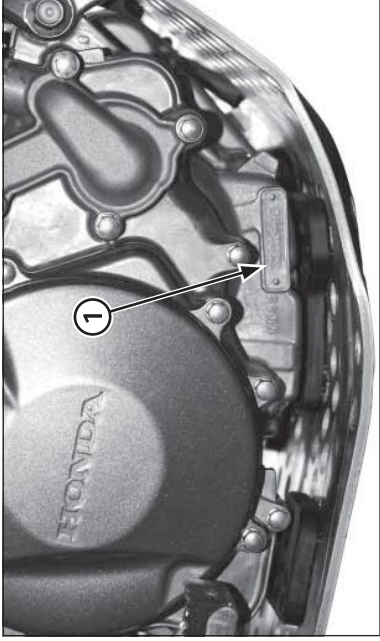


(1) FRAME NUMBER

**Serial numbers**

The Vehicle Identification Number (VIN) is stamped on the right side of the steering head.



(1) ENGINE NUMBER

The serial number of the engine is stamped on the lower right side of the crankcase.

MODEL	TYPE	FRAME No.	ENGINE No.
MRT 300 H	2ED	VTDND15A?HE000001	NN4E7001001
MRT 300 H	4ED	VTDND053?HE000001	NN4E7001001