

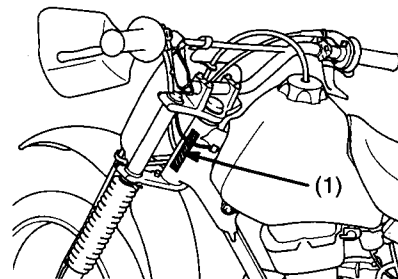
Vehicle Identification

Serial Numbers

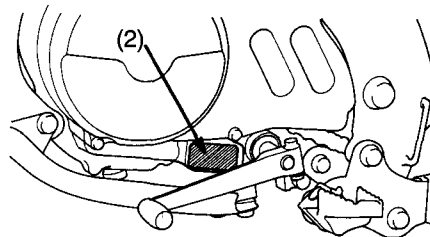
The frame and engine serial numbers are required when you register your motorcycle. They may also be required when ordering replacement parts. You may record these numbers in the Quick Reference section at the rear of the manual.

The frame number (1) is stamped on the left side of the steering head.

The engine number (2) is stamped on the left side of the engine.



(1) frame number



(2) engine number