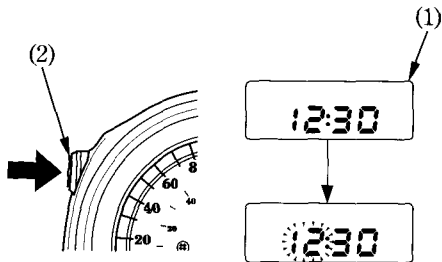


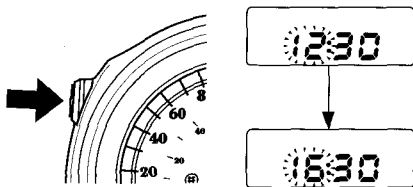
Digital Clock

Shows hour and minute. To adjust the time, proceed as follows:

1. Turn the ignition switch ON.
2. Push and hold the button (2) for more than 2 seconds. The clock will be set in the adjust mode with the hour display flashing.



3. To set the hour, push the button until the desired hour is displayed.
 - The time is advanced by one hour, each time the button is pushed.



- (1) Digital clock
(2) Odometer/Tripmeter/Digital clock select and reset button