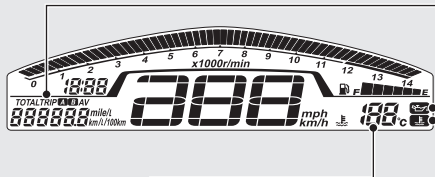


Instruments (Continued)



Coolant temperature gauge ()

Display range: 35 to 132 °C

- Below 34 °C: " - - " displays
- Between 122 and 131 °C:
 - High coolant temperature indicator and warning indicator light
 - Coolant temperature gauge (flashing digits)
- Above 132 °C:
 - High coolant temperature indicator and warning indicator light
 - "132" flashes



Low oil pressure indicator

Comes on when the ignition switch is turned ON. Goes off when the engine starts.

If it comes ON while engine is running: ➔ P.82



High coolant temperature indicator

Comes on briefly when the ignition switch is turned ON.

If it comes ON while riding:

➔ P.81

- ▶ Even if the engine coolant temperature is low, the cooling fan may start running when you rev up the engine. This is normal.