

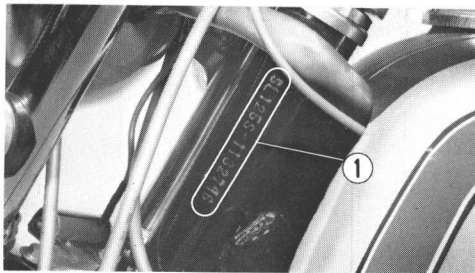
////////////////// SERIAL NUMBER LOCATION ////////////////////

The frame serial number ① is stamped on the left side of the steering head.

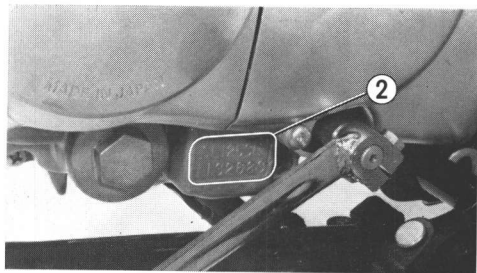
The engine serial number ② is stamped on the lower left side of the crankcase,

just above the left foot peg.

Refer to these serial numbers when ordering replacement parts from your Honda dealer.



① Frame serial number



② Engine serial number