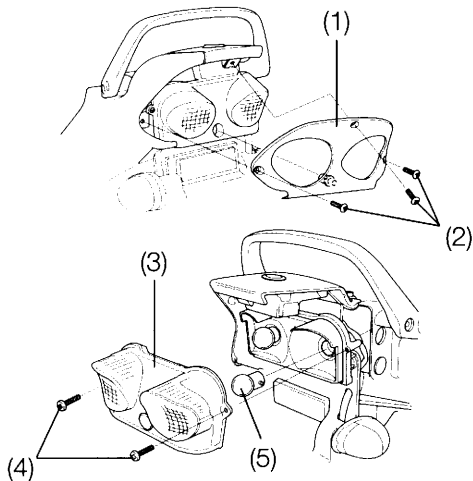


Stop/Tail Light Bulb

1. Remove the right side cover (page 39).
2. Remove the tail cover (1) by removing screws (2).
3. Remove the taillight lens (3) by removing screw (4).
4. Slightly press the bulb (5) and turn it counterclockwise.
5. Install a new bulb in the reverse order of removal.



- | | |
|----------------|-----------|
| (1) Tail cover | (2) Screw |
| (3) Lens | (4) Screw |
| (5) Bulb | |