

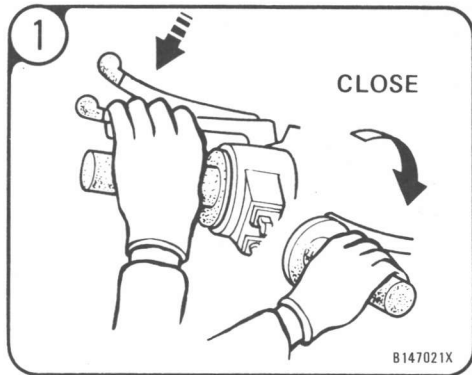
RIDING THE MOTORCYCLE

WARNING

- * Exhaust pipe and muffler become very hot during operation and remain sufficiently hot to inflict burns if touched, even after shutting off the engine. Wear clothing which will completely cover the legs while riding and avoid any contact with unshielded portions of the exhaust system.
- * Do not wear loose clothing which may catch on control levers, starter pedal, foot pegs, wheels and tires.

NOTE

Ensure that all required equipment as specified by local laws and regulations is installed on the motorcycle and operable before riding it on public streets.



Close the throttle and apply the rear brake when moving the machine off the stand or loss of control may result.