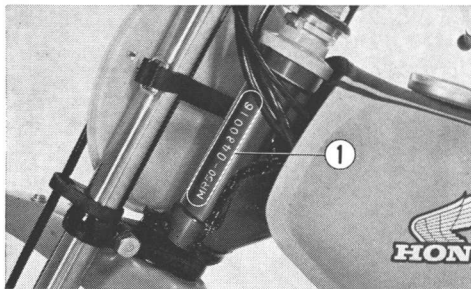


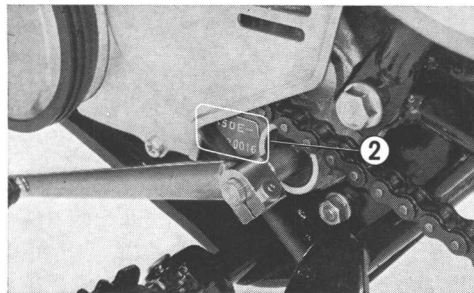
## //////////////////// SERIAL NUMBER LOCATION //////////////////////

The frame serial number ① is stamped on the left side of the steering head, and the engine serial number ② is located on the left side crankcase above the left foot peg. These numbers are required when register-

ing the motorcycle. Refer to the frame or engine serial numbers when ordering replacement parts to ensure that you will obtain the correct parts for your model series.



① Frame serial number



② Engine serial number