

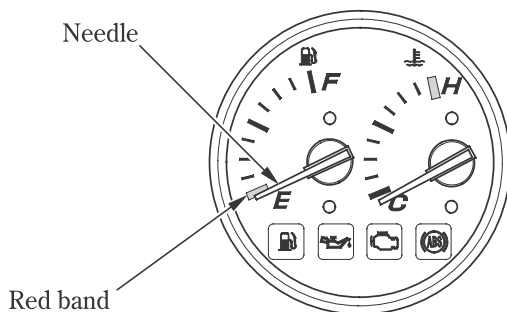


### Fuel Gauge

When the gauge needle enters the red band, fuel will be low and you should refill the tank as soon as possible.

The amount of fuel left in the tank when the needle enters the red band and with the vehicle set upright is approximately:

3.0 ℓ (0.79 US gal , 0.66 Imp gal)



### Coolant Temperature Gauge

When the needle begins to move above the C (Cold) mark, the engine is warm enough for the motorcycle to be ridden. The normal operating temperature range is within the section between the H and C marks. If the needle reaches the H (Hot) mark, stop the engine and check the reserve tank coolant level. Read pages 42 – 43 and do not ride the motorcycle until the problem has been corrected.

#### NOTICE

Exceeding maximum running temperature may cause serious engine damage.

