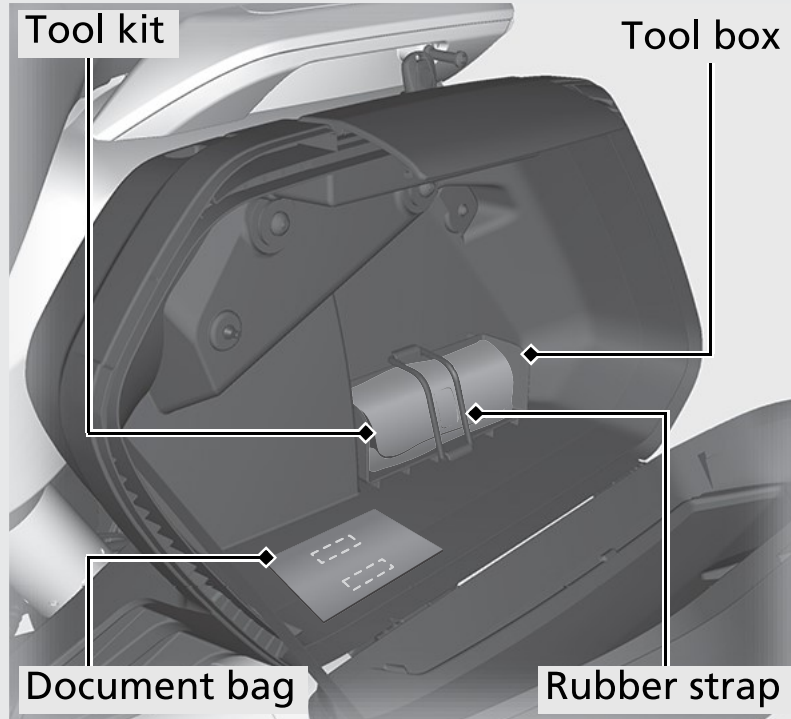


## Tool Kit/Document Bag

The tool kit is located in the tool box (in the left saddlebag) with the rubber strap.

The document bag is located in the left saddlebag with the hook and loop fastener.

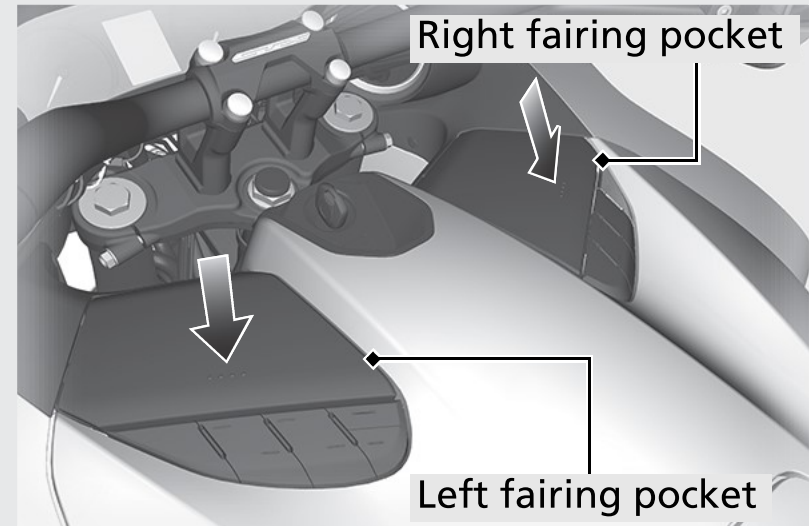


**Opening the Saddlebag** ➔ P.68

## Fairing Pocket

Never exceed the maximum weight capacity.

**Maximum weight: 0.5 kg (1.0 lb)**



### Opening the Fairing Pocket

Push the fairing pocket lid and open it.

### Closing the Fairing Pocket

Close the fairing pocket lid until it locks.