

Additional Maintenance Procedures

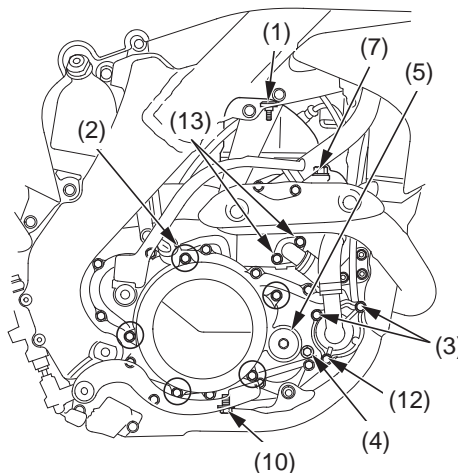
Nuts, Bolts, Fasteners

Check and tighten nuts, bolts, and fasteners before every outing.

ENGINE

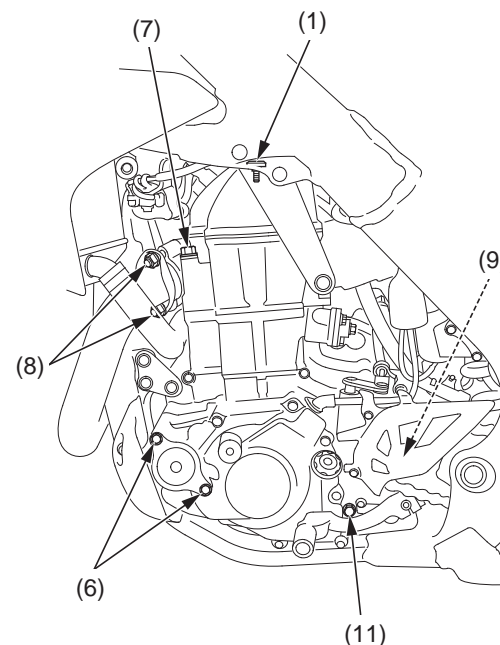
Item	Torque		
	N•m	kgf•m	lbf•ft
1 Cylinder head cover socket bolts	10	1.0	7
2 Clutch cover bolts	10	1.0	7
3 Water pump cover bolts	10	1.0	7
4 Transmission oil check bolt	12	1.2	9
5 Crankshaft hole cap	15	1.5	11
6 Oil filter cover bolts	10	1.0	7
7 Cylinder head bolts	51	5.2	38
8 Exhaust pipe joint nuts	21	2.1	15
9 Drive sprocket bolt	31	3.2	23
10 Engine oil drain bolt	16	1.6	12
11 Transmission oil drain bolt	16	1.6	12
12 Coolant drain bolt	10	1.0	7
13 Water hose joint bolts	10	1.0	7

RIGHT SIDE



- (1) cylinder head cover socket bolts
- (2) clutch cover bolts
- (3) water pump cover bolts
- (4) transmission oil check bolt
- (5) crankshaft hole cap
- (7) cylinder head bolts
- (10) engine oil drain bolt
- (12) coolant drain bolt
- (13) water hose joint bolts

LEFT SIDE



- (1) cylinder head cover socket bolts
- (6) oil filter cover bolts
- (7) cylinder head bolts
- (8) exhaust pipe joint nuts
- (9) drive sprocket bolt
- (11) transmission oil drain bolt