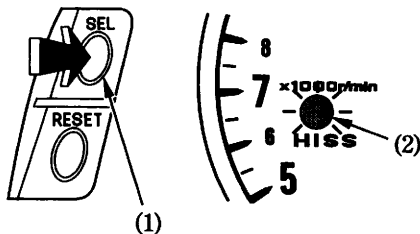


The immobilizer system has such a function that keeps the immobilizer system (HISS) indicator blinking at 2 second intervals for 24 hours. This blinking function can be turned on or off.

To alter the blinking function:

1. Turn the ignition switch ON.
2. Push and hold the SEL button (1) for more than 2 seconds.
The immobilizer system (HISS) indicator (2) instantly flash, the function is enabled.
3. Turn the ignition switch OFF and remove the key.



- (1) SEL button
(2) Immobilizer system (HISS) indicator