

Presetting of Tachometer Red Zone (REV) Indicator Activation Revolution and Indication Pattern

The REV indicator activation revolution and the indication pattern can be altered for your choice.

To set the REV indicator activation revolution:

The original red zone revolution can be selected in 4,000 rpm-to-12,200 rpm range.

1. Press and hold the SEL button (1), turn on the ignition switch. Keep the SEL button pressed in until the initial display is completed.

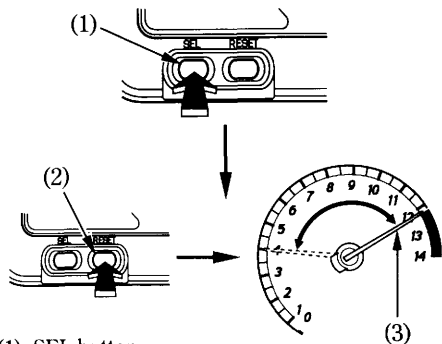
The tachometer needle moves to the set-up revolutions.

2. Each time you press the RESET button (2), the tachometer needle (3) will move by an increment of 250 rpm. (In 12,000 rpm ~ 12,200 rpm range, the increment is 200 rpm.)

Push and hold the RESET button for more than 1 second, the tachometer needle will move by an increment of 1,000 rpm.

As the revolution goes beyond the allowable range, the needle will automatically return to 4,000 rpm.

After completing the original red zone revolution preset, press the SEL button, and proceed to the indication pattern presetting.



- (1) SEL button
- (2) RESET button
- (3) Tachometer needle